

**Total Metal Solution**

**Huaxiao Metal Corporation Limited**



# Faith First, Clients Uppermost

## Contents

Profile of Huaxiao Metal	03
Carbon Steel Hot Rolled coil/plate	04-05
Carbon steel Cold Rolled Coil/Sheet	06
Coated Steel GI	07
Coated Steel GF/GL	08
Coated Steel PPGI/PPGL/PPGF	09-10
Coated Steel EGI	11
Partners	12
Contact	13



## About Huaxiao Metal

Huaxiao Metal Corporation Limited is located in Shanghai, China. We manufacture and export carbon steel, galvanized steel, pre-painted steel, stainless steel, alloy steel, and aluminum in sheet, plate, coil, strip, welded and seamless pipe/tube, bar, wire rod and so on from China and Taiwan.

Especially we are the channels provider for standing stock more than 100,000MT on carbon and coated steel products in China.

At present ,Huaxiao is in the high-speed development stage, we always try our best to perform. Our products are exporting to more than 100 countries over the world with the excellent quality ,good service and competitive prices ,such as Europe, the Americas, Australia, Southeast Asia, the Middle East etc.

With powerful financial strength, advanced managerial concept, excellent marketing service, strict quality control system and the whole scientific method, Adhering to the operation principle of "Faith First, Clients Uppermost", We would like to build win-win corporation with you.

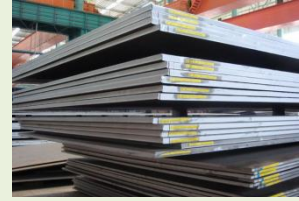
If you are looking for a reliable exporter and manufacturer of high quality back-up pads, you are on the correct selection.



## Carbon Steel Hot Rolled Coil/Plate-Grade

**Application: Commercial, Drawing, Deep Drawing,  
General Structure**

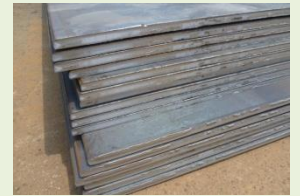
**Main Products**



Specification	
<b>Commercial Quality</b>	<p><b>JIS:</b> G3131 SPHC</p> <p><b>ASTM:</b> A569 A635 A659 A1011 CS Type A, B, C</p> <p><b>SAE:</b> 1006~1025</p>
<b>Drawing Quality</b>	<p><b>JIS:</b> G3131 SPHD</p> <p><b>SAE:</b> 1006~1010</p>
<b>Deep Drawing Quality</b>	<p><b>JIS:</b> G3131 SPHC</p> <p><b>ASTM:</b> A569 A635 A659 A1011 CS Type A, B, C</p> <p><b>SAE:</b> 1006~1025</p>
<b>Commercial Quality</b>	<p><b>JIS:</b> G3131 SPHE</p> <p><b>ASTM:</b> A622 A1011 DS Type A, B</p> <p><b>SAE:</b> 1006~1010</p>
<b>General Structure (T.S. &lt; 490 N/mm2)</b>	<p><b>JIS:</b> G3101 SS330 SS400 G3106 SM400A G3132 SPHT1 SPHT2 SPHT3</p> <p><b>ASTM:</b> A36 A283 GR.C A570 GR.30~40 A1001 SS GR.30~40</p> <p><b>SAE:</b> 1010~1025</p>
<b>General Structure (T. S. ≥ 490 N/mm2)</b>	<p><b>JIS:</b> G3101 SS490 G3106 SM490A SM490A SM490YA G3132 SPH4</p> <p><b>ASTM:</b> A570 GR.45~50 A607 GR.45~70 A1011 SS GR.45, 50 A1011 HSLAS GR.45~70</p> <p><b>SAE:</b> J1392 050X</p>

*Other specification is available on customer's request*





## Carbon Steel Hot Rolled Coil/Plate-Size

**Application: Coil, Strip, Sheet, Plate**

### Main Products

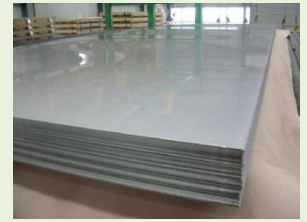
Specification	
<b>Coil</b>	<b>Thickness:</b> 1.50~10.00mm <b>Width:</b> mill edge 600~2000mm <b>ID:</b> 762mm
<b>Strip</b>	<b>Thickness:</b> 1.50~10.00mm <b>Width:</b> mill edge 30~600mm <b>ID:</b> 762mm
<b>Plate</b>	<b>Thickness:</b> 6.00~300mm <b>Width:</b> cut edge 500~4000mm <b>Length:</b> 1200~18000mm
<b>Sheet</b>	<b>Thickness:</b> 1.50~5.99mm <b>Width:</b> cut edge 50~1845mm <b>Length:</b> 760~6100mm

*Other specification is available on customer's request*





## Carbon Steel Cold Rolled Coil/Sheet



**Application: Commercial, Drawing, Deep Drawing**  
**Main Products**

Specification	
<b>Commercial Quality</b>	<b>JIS:</b> G3141 SPCC
	<b>ASTM:</b> A1008 CS Type A, B, C
	<b>SAE:</b> 1008~1012 CQ
<b>Drawing Quality</b>	<b>JIS:</b> G3141 SPCD
	<b>ASTM:</b> A1008 DS Type A, B
	<b>SAE:</b> 1006~1008 DQ
<b>Deep Drawing Quality</b>	<b>JIS:</b> G3141 SPCE (N)
	<b>ASTM:</b> A1008 DDS
	<b>SAE:</b> 1006 DDQ

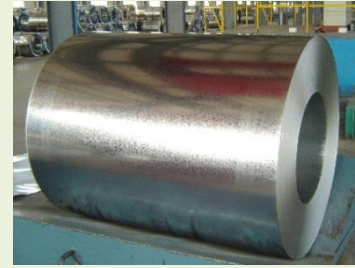
*Other specification is available on customer's request*

**Application: Carbon Steel Cold Rolled Coil//Sheet Available Size**

Specification	
<b>Coil</b>	<b>Thickness:</b> 0.30~3.20mm
	<b>Width:</b> slit edge 600~2000mm
	<b>ID:</b> 506/610mm
<b>Strip</b>	<b>Thickness:</b> 0.30~3.20mm
	<b>Width:</b> mill edge 7~600mm
	<b>ID:</b> 762mm
<b>Sheet</b>	<b>Thickness:</b> 0.30~3.20mm
	<b>Width:</b> cut edge 50~2000mm
	<b>Length:</b> 50~5800mm



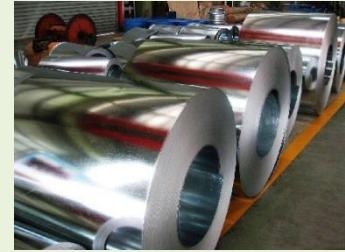
*Other specification is available on customer's request*



## Coated Steel-GI

**Application: GI , Hot-dip Galvanized Steel coils (Zinc Coated)**  
**Main Products**

Specification		JIS G3302 1998				ASTM A653M / A924M 1998				
		SGCC SGC 340 400 440 490 570	SGCH	SGCD1 SGCD2	SGCD3	SGHC SGH 340 400 440 490	CS Type A B C FS Type A B	SS Grade 230 255 275 340	SS Grade 550	DDS
<b>Thickness of Base Steel (mm)</b>		0.20   2.00	0.23   2.00	0.30   2.00	0.60   1.60	1.2   4.50	0.20   4.50	0.20   4.50	0.23   2.00	0.30   4.50
<b>Coating Mass</b>	<b>Regular Spangle</b>	Z08-Z35		Z10-Z45	Z120, Z180, Z275, Z350, Z450		Z90			
	<b>Minimized(Zero) Spangle</b>	Z08, Z12, Z18, Z20, Z22, Z25, Z27, Z35, Z45		Z08-Z35 Z35	Z12-Z35	Z120, Z180, Z275, Z350		Z120 Z180 Z275 Z350		
	<b>Galvan-nealed</b>	F10, F12, F18		?	ZF120, ZF180					
<b>Surface Finish</b>		Regular Spangle, Minimized Spangle, Extra Smooth and Galvannealed								
<b>Surface Treatment</b>		Chromating Treatment, Oiled or Resin Coated (anti Finger Print)								
<b>Coating Thickness</b>		Min. Single Side Coating Thickness: 50 g/m <sup>2</sup> Max. Single Side Coating Thickness: 350 g/m <sup>2</sup>								
<b>Remarks</b>		<ol style="list-style-type: none"> <li>Tolerance for thickness, width, flatness and so on... can conform to the requirements of JIS G3302 or ASTM A653M / A924M.</li> <li>All products with thickness 2.0mm and under can be skin passed.</li> <li>The specification for thicknesses under 1.6mm for hot-rolled base metal according to JIS G3302 will be the same as for thickness 1.6mm and over.</li> <li>Coil inside diameters can be either 508mm or 610mm, maximum coil outside diameter is 2000mm. Weight of a single coil can be from 5 to 30 metric tons.</li> <li>The specification of ASTM such as A653M, A792M, A875M / A924M and etc. have been updated to the latest revisions.</li> </ol>								
<b>Available Size</b>		Thickness: 0.15~4.5mm Width: 30~1534mm								



## Coated Steel-GF/GL

**Application: GL/GF(Galvalume/Galvanfan, Al-Zn Coated)**

### Main Products

	Galfan (5% Al-Zn Coated Steel)								Galvalume(55% Al-Zn Coated Steel)									
	JIS G3317 1994			ASTM A875M 2002					JIS G3321 1998		ASTM A792M 2003			EN 10215 2000				
Specifications	SZAH	SZAC	SZACD	Com	Formin	DD	Struc	Struc	SGLC	SGLC	CS	DS	SS	DX51	DX52	S220G	S550G	
	C	C	1	m-	g	S	-	-	C	D	Typ		Grad	D	D	D	D	
	SAZH	SZAC		erical	Steel		tural	tural	SGL		e			DX53	S250G			
	340	340		Steel	Type		Steel	Steel	400		A		230		D	D		
	400	400		Type	A		Grad	Grad	440		B		255			S280G		
440	440		A	B		Grad	e	490		C		275			D			
			B	C		e	550	570		FS		345			S320G			
			C			230						550			D			
						255									S350G			
						275									D			
						340												
Thickness of Base Steel (mm)	1.50	0.23	0.40	0.23	0.4	0.23	0.23	0.20	0.30	0.20	0	0.20	0.20	0.30	0.20	0.23	0.23	
	4.50	2.00	1.25	4.50	1.2	4.50	2.00	1.38	1.25	1.38	1.2	1.38	1.38	1.25	1.38	1.25	1.25	
					5						5							
Coating Mass	Y08, Y10, Y12, Y18, Y20, Y22, Y25, Y27, Y35			ZGF90, ZGF135, ZGF180, ZGF225, ZGF275, ZGF350					AZ90, AZ120, AZ150, AZ170			AZ150, AZ165, AZ180			AZ100, AZ150, AZ185			
Surface Finish	Regular Spangle, Minimized Spangle								Regular Spangle									
Surface Treatment	Chromating Treatment, Oiled or Resin Coated (Anti Finger Print)																	
Available Size	Hot-dip Galvalume Steel Coils (55% Al-Zn Coated) Thickness: 0.15~1.38mm Width: 600~1300mm Hot-dip Galvafan Steel Coils (5% Al-Zn Coated) Thickness: 0.25~4.5mm Width: 70~1280mm																	





# Coated Steel-PPGI/PPGL/PPGF-1



**Application: PPGI/PPGL/PPGF(Pre-Painted)**  
**Pre-painted Hot-dip Galvanized Steel Coil**  
**Pre-painted Hot-dip 5% Al-Zn Coated Steel Coil**  
**Pre-painted Hot-dip 55% Al-Zn Coated Steel Coil**  
**Main Products**

Specification	
<b>Coating Type</b>	<ol style="list-style-type: none"> <li>1. Polyester</li> <li>2. Silicone Modified , Polyester</li> <li>3. Acrylic</li> <li>4. PVDF</li> </ol>
<b>Product Spec.</b>	<p><b>JIS G3312:</b> CGCC, CGCH,CGCD1, CGC340,CGC400, CGC440,CGC490, CGC570</p> <p><b>JIS G3318:</b> CZACC, CZACH,CZACD1, CZAC340,CZAC400, CZAC440,CZAC490, CZAC570CGLCC,</p> <p><b>JIS G3322:</b> CGLCD,CGLC400, CGLC440,CGLC490, CGLC570</p> <p><b>ASTM A755M,EN 10169</b></p>
<b>Substrate Spec.</b>	<p><b>JIS G3302:</b> SGCC, SGCH,SGCD1, SGC340,SGC400, SGC440,SGC490, SGC570</p> <p><b>JIS G3317:</b> SZACC, SZACH,SZACH1, SZAC340,SZAC400, SZAC440,SZAC490, SZAC570</p> <p><b>JIS G3321:</b> SGLCC, SGLC400,SGLC440, SGLC490,SGLC570</p> <p><b>ASTM A653M:</b> CS TYPE A, B, C FS TYPE A, B SS Grade 230, 255, 275, 340</p> <p><b>ASTM A875M ASTM A792M</b></p> <p><b>EN 10142:</b> DX51D, DX52D,DX53D</p> <p><b>EN 10147:</b> S220GD, S250GD,S280GD, S320GD,S350GD, S550GD</p> <p><b>EN 10214, EN 10215:</b> S220GD DX51D,S250GD DX52D,S280GD DX53D,S320GD, S350GD, S555GD</p>

*Other specification is available on customer's request*





## Coated Steel-GF/ PPGI/PPGL/PPGF-2

**Application: PPGI/PPGL/PPGF(Pre-Painted)**  
**Pre-painted Hot-dip Galvanized Steel Coil**  
**Pre-painted Hot-dip 5% Al-Zn Coated Steel Coil**  
**Pre-painted Hot-dip 55% Al-Zn Coated Steel Coil**



### Main Products

Specification	
<b>Coating Designation</b>	<b>JIS G3302:</b> Z10, Z12, Z18, Z20, Z22, Z25, Z27,Z35
	<b>JIS G3317:</b> Y12, Y18, Y20, Y22,Y25, Y27
	<b>JIS G3321:</b> AZ90, AZ120,AZ150, AZ170
	<b>ASTMA653M:</b> Z100, Z120, Z180,Z275, Z350
	<b>ASTMA875M:</b> ZGF90, ZGF135, ZGF180, ZGF225,ZGF275
	<b>ASTMA792M:</b> AZ150, AZ165, AZ180
	<b>EN 10142:</b> Z100, Z140, Z200,Z225, Z275
	<b>EN 10147:</b> Z100, Z140, Z200, Z225, Z275
	<b>EN 10214:</b> ZA95, ZA130, ZA185, ZA200, ZA255
<b>EN 10215:</b> ZA100, AZ150, AZ185	
<b>Coating Thickness</b>	<b>Top Primer:</b> PU or Epoxy 5um
	<b>Top Coat:</b> 15~25um
	<b>Back Coat:</b> PE or Epoxy 5~12um
<b>Available Size</b>	<b>Pre-painted Hot-dip Galvanized Steel Coil</b> Thickness: 0.2~1.5mm    Width: 700~1534mm
	<b>Pre-painted 5% Al-Zn Coated Steel Coil</b> Thickness: 0.2~1.5mm    Width: 700~1260mm
	<b>Pre-painted 55% Al-Zn Coated Steel Coil</b> Thickness: 0.2~1.25mm    Width: 700~1220mm
	

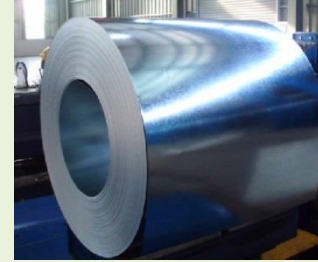
*Other specification is available on customer's request*





## Coated Steel-EGI

**Application: EGI (Electro-galvanized)**  
**Pre-painted Hot-dip Galvanized Steel Coil**  
**Pre-painted Hot-dip 5% Al-Zn Coated Steel Coil**  
**Pre-painted Hot-dip 55% Al-Zn Coated Steel Coil**



### Main Products

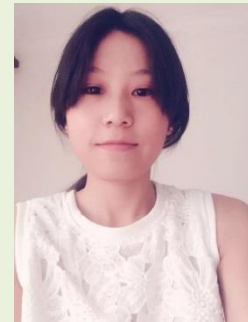
Specification	
<b>Coating Designation</b>	<b>JIS G3302:</b> Z10, Z12, Z18, Z20, Z22, Z25, Z27, Z35
	<b>JIS G3317:</b> Y12, Y18, Y20, Y22, Y25, Y27
	<b>JIS G3321:</b> AZ90, AZ120, AZ150, AZ170
	<b>ASTMA653M:</b> Z100, Z120, Z180, Z275, Z350
	<b>ASTMA875M:</b> ZGF90, ZGF135, ZGF180, ZGF225, ZGF275
	<b>ASTMA792M:</b> AZ150, AZ165, AZ180
	<b>EN 10142:</b> Z100, Z140, Z200, Z225, Z275
	<b>EN 10147:</b> Z100, Z140, Z200, Z225, Z275
	<b>EN 10214:</b> ZA95, ZA130, ZA185, ZA200, ZA255
<b>EN 10215:</b> ZA100, AZ150, AZ185	
<b>Coating Thickness</b>	<b>Top Primer:</b> PU or Epoxy 5um
	<b>Top Coat:</b> 15~25um
	<b>Back Coat:</b> PE or Epoxy 5~12um
<b>Available Size</b>	<b>Pre-painted Hot-dip Galvanized Steel Coil</b> Thickness: 0.2~1.5mm    Width: 700~1534mm
	<b>Pre-painted 5% Al-Zn Coated Steel Coil</b> Thickness: 0.2~1.5mm    Width: 700~1260mm
	<b>Pre-painted 55% Al-Zn Coated Steel Coil</b> Thickness: 0.2~1.25mm    Width: 700~1220mm

*Other specification is available on customer's request*

# Partners



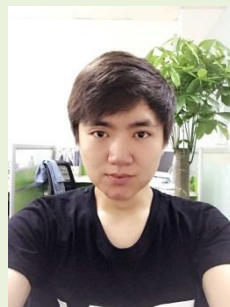
# HXM-Family



Joice



Bonnie



Can



Maggie



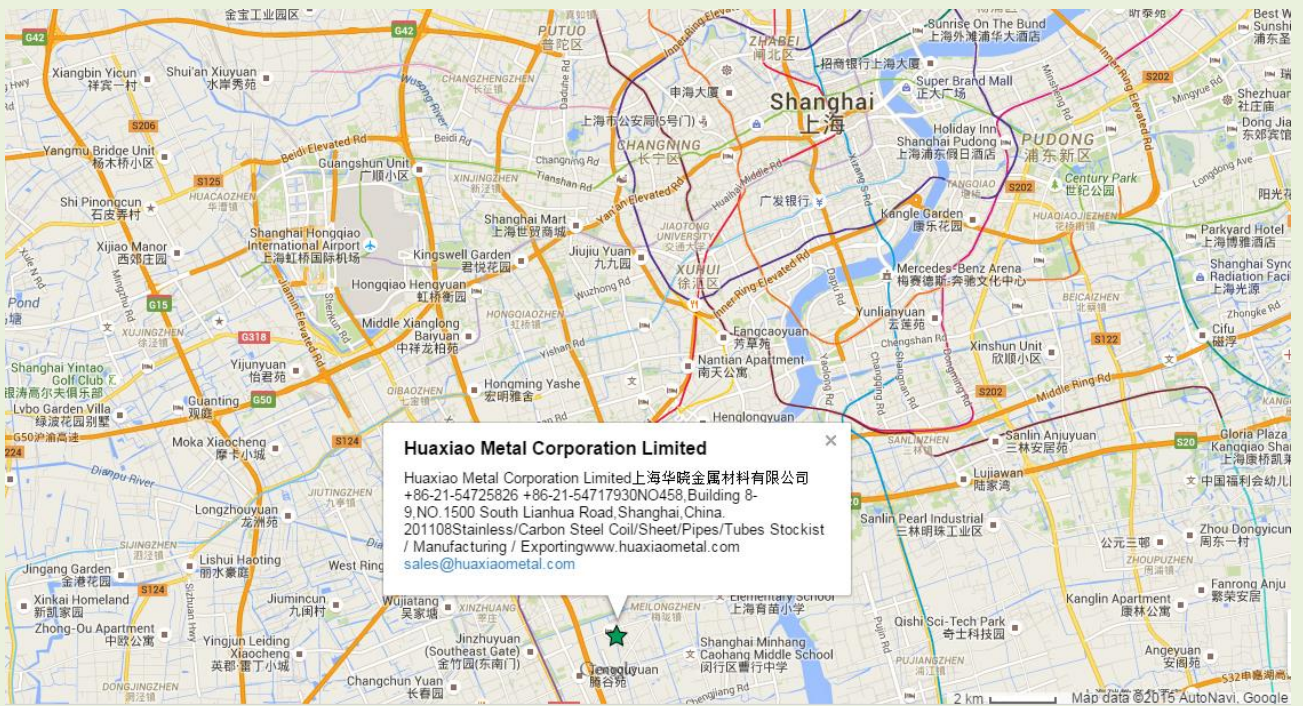
Tristan



Zed

Huaxiao Metal Corporation Limited  
Huaxia International Steel Corporation Limited

Tel: +86-21-54725826 Fax: +86-21-54725826-8007/8011  
Add: NO458, Building 8-9, NO.1500 South Lianhua Road, Shanghai, China. 201108  
sales@huaxiaometal.com www.huaxiaometal.com



## Huaxiao Metal Corporation Limited

Tel: +86-21-54725826 Fax: +86-21-54725826-8007/8011  
 NO.458, Building 8-9, NO.1500 South Lianhua Road, Shanghai, China. 201108  
 sales@huaxiaometal.com www.huaxiaometal.com