

Total Metal Solution

Huaxiao Metal Corporation Limited



Faith First, Clients Uppermost

Contents

Profile of Huaxiao Metal	03
Stainless Steel Hot Rolled	04
Stainless Steel Cold Rolled	05
Stainless Steel Welded Tube	06-07
Stainless Steel Seamless Tube	08-09
Carbon Steel Pipes/Tubes-API 5CT/5D/6A/6D	10
Carbon Steel Pipes/Tubes-API 5L/7B/11B/11E	11
Carbon Steel Pipes/Tubes-ASTM/ASME	12-14
Carbon Steel Pipes/Tubes-DIN	15-16
Carbon Steel Pipes/Tubes-BS	17
Carbon Steel Pipes/Tubes-EN	18
Carbon Steel Pipes/Tubes-JIS	19
Alloy Steel Seamless Pipes	20
Carbon Steel Hot Rolled coil/plate	21-22
Carbon steel Cold Rolled Coil/Sheet	23
Coated Steel GI	24
Coated Steel GF/GL	25
Coated Steel PPGI/PPGL/PPGF	26-27
Coated Steel EGI	28
Aluminum-Coil/Foil/Plate	29
Aluminum-Color Coated	30
Aluminum-Flat/Long	31
Bar/Wire/Rod-Stainless Steel	32-33
Bar/Wire/Rod-Carbon Steel	34
Bar/Wire/Rod-Alloy Steel	35
Partners	36
Contact	37



About Huaxiao Metal

Huaxiao Metal Corporation Limited is located in Shanghai, China. We manufacture and export stainless steel, alloy steel, galvanized steel, pre-painted steel, carbon steel and aluminum in sheet, plate, coil, strip, welded and seamless pipe/tube, bar, wire rod and so on from China and Taiwan.

Especially we are the channels provider for standing stock more than 200,000MT on metal products in China.

At present ,Huaxiao is in the high-speed development stage, we always try our best to perform. Our products are exporting to more than 100 countries over the world with the excellent quality ,good service and competitive prices ,such as Europe, the Americas, Australia, Southeast Asia, the Middle East etc.

With powerful financial strength, advanced managerial concept, excellent marketing service, strict quality control system and the whole scientific method, Adhering to the operation principle of "Faith First, Clients Uppermost", We would like to build win-win corporation with you.

If you are looking for a reliable exporter and manufacturer of high quality back-up pads, you are on the correct selection.



Stainless Steel Hot Rolled

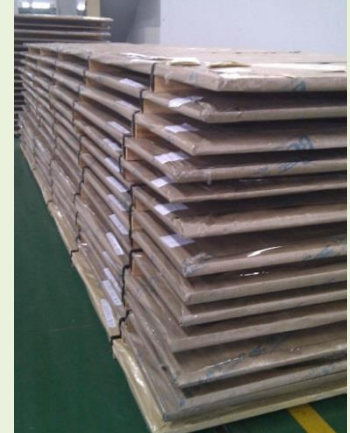


Stainless Steel Hot Rolled in Coil/Sheet/Plate

Main Products

Specification	
<p>Standard</p> <p>Grade</p> 	<p>ASTM: A240 SA24</p> <p>S30100 S30400 S30403 S31008 S31603 S32100 S41008 S43000 S43932 S44400 S44500</p> <p>JIS: G4304 G4305 G4312</p> <p>SUS301 SUS304 SUS304L SUS310 SSUS316L SUS321 SUH409L SUS410S SUS420J2</p> <p>SUS430</p> <p>AISI: 301 304 304L 310S 316L 321 409L 410S 430 439 441 444 445</p> <p>EN: 10088-2 17224 17440 17441</p> <p>1.4310 1.4301 1.4306 1.4845 1.4404 1.4541 1.45121 .4000 1.4028 1.4016 1.4509</p> <p>Mill's Standard: 201 202 204Cu3 L1 L4</p>
<p>Hot Roled</p> <p>Available Size</p>	<p>Coil: Thickness:2.5~16.0 mm Width: 600~2000mm ID: 610mm Finish: NO.1</p> <p>Strip: Thickness:2.5~10.0 mm Width: 16~600mm ID: 610mm Finish: NO.1</p> <p>Plate: Thickness:3~100mm</p> <p>Width: 914, 1000,1219,1250,1500,1524,1800,2000,2500,2800,3000 mm</p> <p>Length: 2000,2438,2500,3000,3048,6069,10000,12000</p> <p>Finish: NO.1,Black</p>

Other specification is available on customer's request





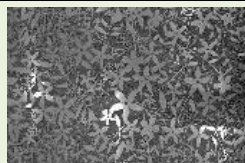
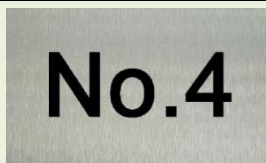
Stainless Steel Cold Rolled

Stainless Steel Cold Rolled in Coil/Sheet/Plate

Main Products

Specification	
<p>Standard Grade</p> 	<p>ASTM: A240 SA24 S30100 S30400 S30403 S31008 S31603 S32100 S41008 S43000 S43932 S44400 S44500</p> <p>JIS: G4304 G4305 G4312 SUS301 SUS304 SUS304L SUS310 SSUS316L SUS321 SUH409L SUS410S SUS420J2 SUS430</p> <p>AISI: 301 304 304L 310S 316L 321 409L 410S 430 439 441 444 445</p> <p>EN: 10088-2 17224 17440 17441 1.4310 1.4301 1.4306 1.4845 1.4404 1.4541 1.45121 .4000 1.4028 1.4016 1.4509</p> <p>Mill's Standard: 201 202 204Cu3 L1 L4</p>
<p>Cold Roled Available Size</p> 	<p>Coil: Thickness: 0.3~3.0 mm Width: 600~2000mm ID: 610 or 508mm</p> <p>Finish: 2B,2D,BA,No.3,No.4,No.5,SB, HL</p> <p>Strip: Thickness: 0.3~3.0 mm Width: 4~600mm ID: 610mm</p> <p>Finish: 2B,2D,BA,No.3,No.4,No.5,SB, HL</p> <p>Sheet: Thickness:0.3~3.0 mm</p> <p>Width: 914, 1000,1219,1250,1500, 1524, 1800, 2000 mm</p> <p>Length: 2000,2438,2500,3000,3048,6069,10000</p> <p>Finish: No.1, 2B, BA, No.3, No.4, No.5, No.8, HL, Etching, SB,Back Pass, Ti-coating</p> <p>Protect Film: PVC, PE, LASER-PVC, Black-White, Blue-White, 20um-120um</p> 

Other specification is available on customer's request





Stainless Steel Welded Tube-1

Standard: ASTM A554 JIS G3446
Round Tubes, Square Tubes, Rectangular Tubes

Standard: ASTM A312,A358,A778,JIS G3459
Round Tubes



Main Products

Specification	
<p>ASTMA554 JIS G3446 Round Tube</p>	<p>Material/Steel Grade: MT304, MT304L, MT316L, MT430 Grade 201, 202 as per mill's STD SUS304</p> <p>Application: Mechanical and Structural Tubes</p> <p>Size: OD: 7.9~152.4mm WT: 0.5~6.5mm</p> <p>Finish: Mill,220/320/400/600/800 Grit</p> 
<p>ASTM A554 JIS G3446 Square Tube</p>	<p>Material/Steel Grade: MT304, MT304L, MT316L,MT430 Grade 201, 202 as per mill's STD</p> <p>Application: Square Tubes</p> <p>Size: OD: 12.7x12.7~150x150mm WT: 0.7~6.5mm</p> <p>Finish: Mill 220/320/400/600 Grit</p> 
<p>ASTM A554 JIS G3446 Rectangular Tube</p>	<p>Material/Steel Grade: MT304, MT304L, MT316L,MT430 Grade 201, 202 as per mill's STD</p> <p>Application: Rectangular Tubes</p> <p>Size: OD: 10x20~100x200mm WT: 0.7~6.5mm</p> <p>Finish: Mill 220/320/400/600 Grit</p>
<p>ASTM A312 A358 A778 JIS G3459 Round Tube</p>	<p>Material/Steel Grade: TP304, TP304L, TP316L SUS304TP</p> <p>Application: Industrial Pipes</p> <p>Size: OD: 1/4"~40"WT: SCH5S~SCH80S</p> <p>Finish: Mill</p> 

Other specification is available on customer's request





Stainless Steel Welded Tube-2

Standard:

ASTM A312, A358, A778 JIS G3459

ASTM A249, A269 JIS G3463



Main Products

Specification	
ASTM A249 A269 JIS G3463 Round Tube	<p>Material/Steel Grade: TP304, TP304L, TP316L SUS304TP</p> <p>Application: for Boiler and Heat-Exchanger, General Service Tubing</p> <p>Size: OD: 15.9~139.8mm WT: 1.6~5.0mm</p> <p>Finish: Mill</p> 
ASTMA270 JIS G3447 Round Tube	<p>Material/Steel Grade: TP304, TP304L, TP316L, SUS304TBS</p> <p>Application: Sanitary Tubes</p> <p>Size: OD: 25.4~165.2mm WT: 0.8~3.05mm</p> <p>Finish: Mill,220/320/400/600 Grit</p> 
JIS G3448 Round Tube	<p>Material/Steel Grade: SUS304TPD</p> <p>Application: Large Gauge Pipes for Ordinary Piping</p> <p>Size: OD: 15.88~318.5mm WT: 0.8~3.0mm</p> <p>Finish: Mill</p> 
JIS G3468 Round Tube	<p>Material/Steel Grade: SUS304TPY</p> <p>Application: Large Diameter Pipes</p> <p>Size: OD: 14"~40" WT: SCH5S~SCH40S</p> <p>Finish: Mill</p>  

Other specification is available on customer's request





Stainless Steel Seamless Tube-1

Standard:

ASTM A312, A312M ASME SA312 / SA312M

ASTM A269, ASME SA269

ASTM A213, A213M ASME SA213 / SA213M



Main Products

Specification	
ASTM A312/A312M ASME SA312/SA312M Round Tube	Material/Steel Grade: TP304, TP304L, TP304H, TP310, TP310S, TP316, TP316L, TP316Ti, TP317, TP317L, TP321, TP321H, TP347, TP347H Application: Seamless Austenitic Stainless Steel Pipes Size: OD: 1/4"~20" WT: SCH5S~SCH80S Finish: Mill
ASTM A269 ASMESA269 Round Tube	Material/Steel Grade: TP304, TP304L, TP304H, TP310, TP310S, TP316, TP316L, TP316Ti, TP317, TP317L, TP321, TP321H, TP347, TP347H Application: Seamless Austenitic Stainless Steel Tubing for General Service Size: OD: 6.0~50.8mm WT: 0.8~10.0mm Finish: Mill
ASTMA213/A213M ASMESA213/SA213M Round Tube	Material/Steel Grade: TP304, TP304L, TP304H, TP310, TP310S, TP316, TP316L, TP316Ti, TP317, TP317L, TP321, TP321H, TP347, TP347H Application: Seamless Austenitic Alloy-Steel Boiler, Super Heater and Heat-Exchanger Tubes Size: OD: 6.0~50.8mm WT: 0.8~10.0mm Finish: Mill

Other specification is available on customer's request





Stainless Steel Seamless Tube-2

Standard:

ASTM A790/790M ,A789/789M ,A511

EN 10216 DIN 17456, 17458



Main Products

Specification	
ASTM A790/790M Round Tube	Material/Steel Grade: S31803, S32205, S32750 Application: Seamless Duplex Stainless Steel Tubing for General Service Size: OD: 3/4"~10" WT: SCH5S~SCH80S Finish: Mill
ASTM A789/789M Round Tube	Material/Steel Grade: S31803, S32205, S32750 Application: Seamless Duplex Stainless Steel Tubing for General Service Size: OD: 19.0~60.5mm WT: 1.2~5.0mm Finish: Mill
ASTM A511 Round Tube	Material/Steel Grade: MT304, MT304L, MT304H, MT310, MT310S, MT316, MT316L, MT317, MT317L, MT321, MT321H, MT347 Application: Seamless Stainless Steel Mechanical Tubing Size: OD: 6.0~50.8mm WT: 0.8~10.0mm Finish: Mill
EN10216 DIN17456 DIN17458 Round Tube	Material/Steel Grade: 1.4301, 1.4307, 1.4541, 1.4401, 1.4404, 1.4571, 1.4878, 1.4432, 1.4462 Application: Seamless Stainless Steel Tubes for Pressure Purposes Size: OD: 6.0~530.0mm WT: 0.8~34.0mm Finish: Mill



Other specification is available on customer's request





Carbon Steel Pipes/Tubes-1



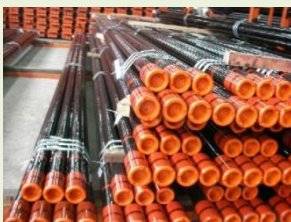
Standard:
API SPEC 5CT Welded , Seamless Pipes/Tubes
API SPEC 5D 6A 6D Pipes/Tubes

Main Products

Specification	
<p>API SPEC 5CT Welded Pipes</p>	<p>Material/Steel Grade:</p> <p>Casting:J55, K55, N80, L80</p> <p>Tubing:J55, K55, N80, L80, H40</p> <p>Application: extracting petroleun</p> <p>Size(mm):</p> <p>Casting:OD48.3~273 x WT2.77~11.43</p> <p>Tubing:OD48.3~273 x WT2.77~11.43</p>
<p>API SPEC 5CT Seamless Pipes</p>	<p>Material/Steel Grade:</p> <p>Casting: J55, K55, N80, L80, P110</p> <p>Tubing:J55, K55, N80, L80, H40</p> <p>Application: extracting petroleun</p> <p>Size(mm):</p> <p>Casting:OD114~219 x WT5.2~22.2</p> <p>Tubing:OD48.3~114.3 x WT3.2~16</p>
<p>API SPEC 5D 6A 6D</p>	<p>Customer's request</p>



Other specification is available on customer's request





Carbon Steel Pipes/Tubes-2

Standard:

API SPEC 5L Welded , Seamless Pipes/Tubes

API SPEC 7 11B 11E Pipes/Tubes



Main Products

Specification	
<p>API SPEC 5L Welded Pipes</p>	<p>Material/Steel Grade: A, B, X42, X46, X52, X56, X60, X65 ,X70, PSL1/PSL2</p> <p>Application: conveying water,petroleum/oil,gas,other fluid</p> <p>Size:</p> <p>ERW: 8"-24'</p> <p>LSAW: 16"-64"</p> <p>SSAW: 8"-100"</p> <p>Forming: JCOE UOE RBE</p> <p>Wall Thickness: Sch20,Sch30,Sch40,Sch80,Sch160,Sch STD</p> <p>Coating: Bare, Black, 3PE/2PE ,FBE/2FBE,3PP</p>
<p>API SPEC 5L Seamless Pipes</p>	<p>Material/Steel Grade: A, B, X42, X46, X52, X56, X60, X65 ,X70, X80, PSL1/PSL2</p> <p>Application: conveying water,petroleum/oil,gas,other fluid</p> <p>Size: 1/4"-24'</p> <p>Wall Thickness: Sch20,Sch30,Sch40,Sch80,Sch160,Sch STD</p> <p>Coating: Black,3PE/2PE ,FBE/2FBE,3PP</p>
<p>API SPEC 7 11B 11E</p>	<p>Customer's request</p>



Other specification is available on customer's request





Carbon Steel Pipes/Tubes-3

Standard:
ASTM A135, A53, A252, A500
Welded Pipes/Tubes



Main Products

Specification	
ASTMA135 Welded Pipes	<p>Material/Steel Grade: A, B</p> <p>Application: ERW/Electric-Resistance-welded Steel Pipes</p> <p>Size(mm): OD42.2~114.3 x WT2.11~2.63</p>
ASTMA53 Welded Pipes	<p>Material/Steel Grade: A, B</p> <p>Application: ERW and Hot-dip galvanized Steel Pipes</p> <p>Size(mm): OD21.3~273 x WT2.11~12.7</p> <p>Finish: Black,Hot-dip galvanized</p>
ASTMA252 Welded Pipes	<p>Material/Steel Grade: Gr2, Gr3</p> <p>Application: Pipes for Piling Usage</p> <p>Size(mm): OD219.1~508 x WT3.6~12.7</p>
ASTMA500 Welded Pipes	<p>Material/Steel Grade: Carbon Steel</p> <p>Application1: Tubes for General Structural Purpose</p> <p>Size1(mm): OD21.3~273 x WT2.11~12.7</p> <p>Application2: Square Pipes for General Structural Purpose</p> <p>Size2(mm): 25 x 25~160 x 160 x WT1.2~8.0</p>

Other specification is available on customer's request





Carbon Steel Pipes/Tubes-4

Standard:

ASTM A53, A106, A179, A192, A199

Seamless Pipes/Tubes



Main Products

Specification	
ASTMA53 Seamless Pipes/Tubes	Material/Steel Grade: GR.A, GR.B, GR.C Application: Conveying water,petroleum,gas,other common fluid Size(mm): OD10.3~1200 x WT1.0~150 Finish: Black and Hot-dipped Zinc-coated
ASTMA106/A53M ASME SA106 Seamless Pipes/Tubes	Material/Steel Grade: GR.B, GR.C Application: for High Temperature Service Size(mm): OD10.3~1200 x WT1.0~150
ASTMA179/A53M ASME SA179 Seamless Pipes/Tubes	Material/Steel Grade: Low Carbon Steel Application: Seamless Cold drawn Low Carbon Steel for Heat Exchanger and Condenser Tubes Size(mm): OD10.3~426 x WT1.0~36
ASTMA192/A192M ASME SA192 Seamless Pipes/Tubes	Material/Steel Grade: Low Carbon Steel Application: Boiler Tubes for High Pressure Size(mm): OD10.3~426 x WT1.0~36
ASTMA199/A199M Seamless Pipes/Tubes	Material/Steel Grade: T5, T22 Application: Seamless Cold-drawn Intermediate Alloy Steel Heat-exchanger and Condenser Tubes Size(mm): OD10.3~426 x WT1.0~36

Other specification is available on customer's request





Carbon Steel Pipes/Tubes-5

Standard:

ASTM A210, A213, A333, A334, A556

Seamless Pipes/Tubes



Main Products

Specification	
ASTMA210/A210M Seamless Pipes/Tubes	Material/Steel Grade: A1, C Application: Seamless Medium-carbon Steel Boiler and Superheater Tubes Size(mm): OD10.3~426 x WT1.0~36
ASTMA213/A213M Seamless Pipes/Tubes	Material/Steel Grade: T5, T9, T11, T12, T22, T91 Application: Seamless Ferritic and Austenitic Alloy Steel Boiler, Superheater and Heat-exchanger Tubes Size(mm): OD10.3~426 x WT1.0~36
ASTMA333 Seamless Pipes/Tubes	Material/Steel Grade: Gr1, Gr3, Gr6 Application: Seamless Carbon and Alloy Steel for Mechanical Tubing Size: 1/4"~42" x SCH20~XXS
ASTMA334 Seamless Pipes/Tubes	Material/Steel Grade: Gr1, Gr6 Application: for Low Temperature Use Size: 1/4"~4" x SCH20~SCH80
ASTMA556 Seamless Pipes/Tubes	Material/Steel Grade: A2, B2 Application: Seamless Cold-drawn Carbon Steel Feedwater Heater Tubes Size(mm): OD10.3~426 x WT1.0~36

Other specification is available on customer's request





Carbon Steel Pipes/Tubes-6

Standard:

DIN 2440

Welded Pipes/Tubes



Main Products

Specification

DIN 2440

Material/Steel Grade: Carbon Steel

Welded Pipes:

Application: Threaded Steel Pipes

Size(mm): OD21~164 x WT2.65~4.85

Finish: Hot dip galvanizing

Other specification is available on customer's request





Carbon Steel Pipes/Tubes-7



Standard:

DIN 17175 DIN 2319 DIN 1629 DIN 2440 DIN 2393

Seamless Pipes/Tubes

Main Products

Specification	
DIN 17175 Seamless Pipes/Tubes	Material/Steel Grade: St35.8,St45.8, 10CrMo910, 15Mo3, 13CrMo44, STPL340, STB410, STB510, WB36 Application: for Elevated Temperature Size(mm): OD10~762 x WT1.0~120
DIN 2319 Seamless Pipes/Tubes	Material/Steel Grade: ST35,ST37,ST37.4,ST45,ST52,ST52.4 Application: Used in hydraulic system, automobile, locomotive and military industry Size(mm): OD4~190 x WT0.5~15 Material State: NBK(+N), GBK(+A), BK(+C), BKW(+LC), BKS(+SR).
DIN 1629 Seamless Pipes/Tubes	Material/Steel Grade: St37.0, St44.0, St52.0 Application: Used in manufacturing pipeline, vessel, equipment, pipe fittings and steel structure Size(mm): OD(10.2 ~ 219.1 mm)x WT(1.6 ~ 45 mm)
DIN 2440 Seamless Pipes/Tubes	Material/Steel Grade: St33.2 Application: Threaded Steel Pipes Size(mm): OD13.5~165.1 x WT1.8~4.85 Finish: Hot dip galvanizing
DIN 2393 Seamless Pipes/Tubes	Material/Steel Grade: RSt34-2, RSt37-2, RSt44-2,St52 Application: For Structural Purpose Size(mm): OD16~426 x WT1.0~36

Other specification is available on customer's request





Carbon Steel Pipes/Tubes-8

Standard:

BS1387, Welded Pipes/Tubes

BS970, BS3059 Seamless Pipes/Tubes



Main Products

Specification	
BS1387 Welded Pipes/Tubes	Material/Steel Grade: Carbon Steel
	Application: Screwed and Socketed Steel Tubes
	Size(mm): OD21.4~113.9 x WT2~3.6
	Finish: Hot dip galvanizing
BS 970 Seamless Pipes/Tubes	Material/Steel Grade: Carbon Steel
	Application: for Machine Structural
	Size(mm): OD10~762 x WT1.0~120
BS 3059 Seamless Pipes/Tubes	Material/Steel Grade: 360, 410, 440, 460, 490
	Application: for Boiler and Heat Exchangers
	Size(mm): OD10~762 x WT1.0~120

Other specification is available on customer's request





Carbon Steel Pipes/Tubes-9

Standard:

EN 39, Welded Pipes/Tubes

EN 10297-1 EN 10210-1 EN 10305-1 Seamless Pipes/Tubes



Main Products

Specification	
EN 39 Welded Pipes/Tubes	<p>Material/Steel Grade: Carbon Steel</p> <p>Application: Scaffolding Pipes</p> <p>Size(mm): OD48.3 x WT3.2~4</p>
EN 10297-1 Seamless Pipes/Tubes	<p>Material/Steel Grade:E235, E275, E315, E355</p> <p>Application: For manufacture of pipelines, vessels, equipment, pipe fittings and steel structures</p> <p>Size(mm): OD (21.3~219mm) x WT (2~60mm)</p>
EN 10210-1 Seamless Pipes/Tubes	<p>Material/Steel Grade:S235JRH, S275JOH, S275J2H, S355JOH, S355J2H, S355K2H</p> <p>Application: For manufacture of pipelines, vessels, equipment, pipe fittings and steel structures</p> <p>Size(mm): OD (21.3~219mm) x WT (2~60mm)</p>
EN 10305-1 Seamless Pipes/Tubes	<p>Material/Steel Grade:E215, E235, E355, E255, E410</p> <p>Application: Used in hydraulic system, automobile, locomotive and military industry</p> <p>Size(mm): OD (4~190mm) x WT (0.5~15mm)</p>

Other specification is available on customer's request





Carbon Steel Pipes/Tubes-10



Standard:

JIS G3444 G3445 G3452 G3454 G8305 G3466

Main Products

Specification	
JIS G3444 Pipes/Tubes	Material/Steel Grade: Carbon Steel Application: for General Structure Purpose Size(mm): OD21.7~216.3 x WT2.0~6.0
JIS G3445 Pipes/Tubes	Material/Steel Grade: STKM11A, STKM13A Application: for Machine Structure Purpose Size(mm): OD15~76 x WT0.7~3.0
JIS G3452 Pipes/Tubes	Material/Steel Grade: Garbon Steel Application: for Ordinary Piping Size(mm): OD 21.9~216.3 x WT2.8~5.8
JIS G3454 Pipes/Tubes	Material/Steel Grade: Carbon Steel Application: for Pressure Service Size(mm): OD21.7~216.3 x WT2.8~7.1
JIS G8305 Pipes/Tubes	Material/Steel Grade: G16~G104, C19~C75, E19~E75 Application: Rigid Steel Conduits Size(mm): OD 21~113.4 x WT1.2~3.5
JIS G3466 Pipes/Tubes	Material/Steel Grade: Garbon Steel Application: Rectangular Pipes for General Structure Size(mm): 16 x 16~150 x 150 x 0.7~6

Other specification is available on customer's request





Alloy steel Seamless Pipes

Standard:

ASTM A213 A335 A519 Pipes/Tubes

EN 10216-2 Pipes/Tubes



Main Products

Specification	
ASTM A213 Pipes/Tubes	<p>Material/Steel Grade:T5, T9, T11, T12, T22, T91</p> <p>Application: Seamless Ferritic and Austenitic Alloy Steel Boiler, Superheater and Heat-Exchanger Tubes</p> <p>Size: OD10.3~426mm x WT1.0~36mm</p> <p>Finish: Mill</p>
ASTM A335 Pipes/Tubes	<p>Material/Steel Grade:P5, P9, P11, P12, P22, P91, P92</p> <p>Application: Seamless Stainless Steel Tubes for Pressure Purposes</p> <p>Size: OD1/4"~42" x WT2~120mm</p> <p>Finish: Mill</p>
ASTM A519 Pipes/Tubes	<p>Material/Steel Grade:4130, 4130X, 4140</p> <p>Application: Seamless Carbon and Alloy Steel for Mechanical Tubing</p> <p>Size: OD16"~42" x WT10~100mm</p> <p>Finish: Mill</p>
EN 10216-2 Pipes/Tubes	<p>Material/Steel Grade:13CrMo4-5, 1-CrMo9-10, X10CrMoVNb9-1,15NiCuMoNb5-6-4</p> <p>Application: Seamless Ferritic Alloy Steel Pipes for High Temperature Use</p> <p>Size: OD8"~42" x WT 15~100mm</p> <p>Finish: Mill</p>

Other specification is available on customer's request

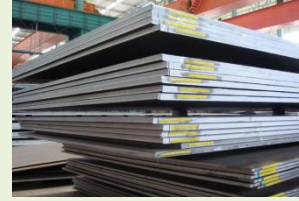




Carbon Steel Hot Rolled Coil/Plate-Grade

**Application: Commercial, Drawing, Deep Drawing,
General Structure**

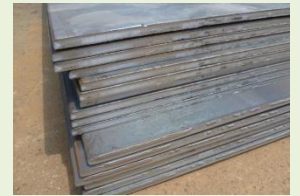
Main Products



Specification	
Commercial Quality	JIS: G3131 SPHC
	ASTM: A569 A635 A659 A1011 CS Type A, B, C
	SAE: 1006~1025
Drawing Quality	JIS: G3131 SPHD SAE: 1006~1010
Deep Drawing Quality	JIS: G3131 SPHC ASTM: A569 A635 A659 A1011 CS Type A, B, C SAE: 1006~1025
Commercial Quality	JIS: G3131 SPHE ASTM: A622 A1011 DS Type A, B SAE: 1006~1010
General Structure (T.S. < 490 N/mm2)	JIS: G3101 SS330 SS400 G3106 SM400A G3132 SPHT1 SPHT2 SPHT3 ASTM: A36 A283 GR.C A570 GR.30~40 A1001 SS GR.30~40 SAE: 1010~1025
General Structure (T. S. ≥ 490 N/mm2)	JIS: G3101 SS490 G3106 SM490A SM490A SM490YA G3132 SPH4 ASTM: A570 GR.45~50 A607 GR.45~70 A1011 SS GR.45, 50 A1011 HSLAS GR.45~70 SAE: J1392 050X

Other specification is available on customer's request





Carbon Steel Hot Rolled Coil/Plate-Size

Application: Coil, Strip, Sheet, Plate

Main Products

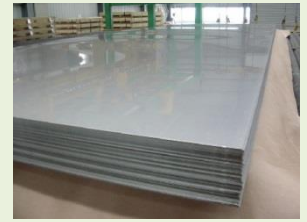
Specification	
Coil	Thickness: 1.50~10.00mm Width: mill edge 600~2000mm ID: 762mm
Strip	Thickness: 1.50~10.00mm Width: mill edge 30~600mm ID: 762mm
Plate	Thickness: 6.00~300mm Width: cut edge 500~4000mm Length: 1200~18000mm
Sheet	Thickness: 1.50~5.99mm Width: cut edge 50~1845mm Length: 760~6100mm

Other specification is available on customer's request





Carbon Steel Cold Rolled Coil/Sheet



Application: Commercial, Drawing, Deep Drawing
Main Products

Specification	
Commercial Quality	JIS: G3141 SPCC
	ASTM: A1008 CS Type A, B, C
	SAE: 1008~1012 CQ
Drawing Quality	JIS: G3141 SPCD
	ASTM: A1008 DS Type A, B
	SAE: 1006~1008 DQ
Deep Drawing Quality	JIS: G3141 SPCE (N)
	ASTM: A1008 DDS
	SAE: 1006 DDQ

Other specification is available on customer's request

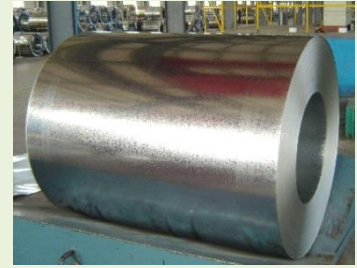
Application: Carbon Steel Cold Rolled Coil//Sheet Available Size

Specification	
Coil	Thickness: 0.30~3.20mm
	Width: slit edge 600~2000mm
	ID: 506/610mm
Strip	Thickness: 0.30~3.20mm
	Width: mill edge 7~600mm
	ID: 762mm
Sheet	Thickness: 0.30~3.20mm
	Width: cut edge 50~2000mm
	Length: 50~5800mm



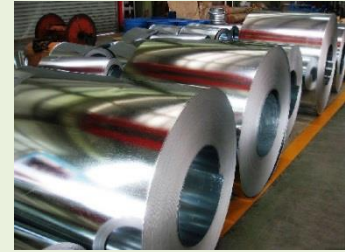
Other specification is available on customer's request

Coated Steel-GI



Application: GI , Hot-dip Galvanized Steel coils (Zinc Coated)
Main Products

Specification		JIS G3302 1998					ASTM A653M / A924M 1998			
		SGCC SGC 340 400 440 490 570	SGCH	SGCD1 SGCD2	SGCD3	SGHC SGH 340 400 440 490	CS Type A B C FS Type A B	SS Grade 230 255 275 340	SS Grade 550	DDS
Thickness of Base Steel (mm)		0.20 2.00	0.23 2.00	0.30 2.00	0.60 1.60	1.2 4.50	0.20 4.50	0.20 4.50	0.23 2.00	0.30 4.50
Coating Mass	Regular Spangle	Z08-Z35		Z10-Z45	Z120, Z180, Z275, Z350, Z450		Z90			
	Minimized(Zero) Spangle	Z08, Z12, Z18, Z20, Z22, Z25, Z27, Z35, Z45	Z08-Z35 Z35	Z12-Z35	Z120, Z180, Z275, Z350		Z120 Z180 Z275 Z350			
	Galvan-nealed	F10, F12, F18		?	ZF120, ZF180					
Surface Finish		Regular Spangle, Minimized Spangle, Extra Smooth and Galvannealed								
Surface Treatment		Chromating Treatment, Oiled or Resin Coated (anti Finger Print)								
Coating Thickness		Min. Single Side Coating Thickness: 50 g/m ² Max. Single Side Coating Thickness: 350 g/m ²								
Remarks		<ol style="list-style-type: none"> Tolerance for thickness, width, flatness and so on... can conform to the requirements of JIS G3302 or ASTM A653M / A924M. All products with thickness 2.0mm and under can be skin passed. The specification for thicknesses under 1.6mm for hot-rolled base metal according to JIS G3302 will be the same as for thickness 1.6mm and over. Coil inside diameters can be either 508mm or 610mm, maximum coil outside diameter is 2000mm. Weight of a single coil can be from 5 to 30 metric tons. The specification of ASTM such as A653M, A792M, A875M / A924M and etc. have been updated to the latest revisions. 								
Available Size		Thickness: 0.15~4.5mm Width: 30~1534mm								



Coated Steel-GF/GL

Application: GL/GF(Galvalume/Galvanfan, Al-Zn Coated)

Main Products

	Galfan (5% Al-Zn Coated Steel)								Galvalume(55% Al-Zn Coated Steel)									
	JIS G3317 1994			ASTM A875M 2002					JIS G3321 1998		ASTM A792M 2003			EN 10215 2000				
Specifications	SZAH	SZAC	SZACD	Com	Formin	DD	Struc	Struc	SGLC	SGLC	CS	DS	SS	DX51	DX52	S220G	S550G	
	C	C	1	m-	g	S	-	-	C	D	Typ		Grad	D	D	D	D	
	SAZH	SZAC		erical	Steel		tural	tural	SGL		e			DX53		S250G		
	340	340		Steel	Type		Steel	Steel	400		A		230		D	D		
	400	400		Type	A		Grad	Grad	440		B		255			S280G		
440	440		A	B		230	e	490		C		275			D			
			B	C		255	550	570		FS		345			S320G			
			C			275						550			D			
						340									S350G			
															D			
Thickness of Base Steel (mm)	1.50	0.23	0.40	0.23	0.4	0.23	0.23	0.20	0.30	0.20	0	0.20	0.20	0.30	0.20	0.23		
	4.50	2.00	1.25	4.50	1.2	4.50	2.00	1.38	1.25	1.38	1.2	1.38	1.38	1.25	1.38	1.25		
					5						5							
Coating Mass	Y08, Y10, Y12, Y18, Y20, Y22, Y25, Y27, Y35			ZGF90, ZGF135, ZGF180, ZGF225, ZGF275, ZGF350					AZ90, AZ120, AZ150, AZ170			AZ150, AZ165, AZ180			AZ100, AZ150, AZ185			
Surface Finish	Regular Spangle, Minimized Spangle								Regular Spangle									
Surface Treatment	Chromating Treatment, Oiled or Resin Coated (Anti Finger Print)																	
Available Size	Hot-dip Galvalume Steel Coils (55% Al-Zn Coated) Thickness: 0.15~1.38mm Width: 600~1300mm Hot-dip Galvafan Steel Coils (5% Al-Zn Coated) Thickness: 0.25~4.5mm Width: 70~1280mm																	



Coated Steel-PPGI/PPGL/PPGF-1



Application: PPGI/PPGL/PPGF(Pre-Painted)
Pre-painted Hot-dip Galvanized Steel Coil
Pre-painted Hot-dip 5% Al-Zn Coated Steel Coil
Pre-painted Hot-dip 55% Al-Zn Coated Steel Coil
Main Products

Specification	
Coating Type	<ol style="list-style-type: none"> 1. Polyester 2. Silicone Modified , Polyester 3. Acrylic 4. PVDF
Product Spec.	<p>JIS G3312: CGCC, CGCH,CGCD1, CGC340,CGC400, CGC440,CGC490, CGC570</p> <p>JIS G3318: CZACC, CZACH,CZACD1, CZAC340,CZAC400, CZAC440,CZAC490, CZAC570CGLCC,</p> <p>JIS G3322: CGLCD,CGLC400, CGLC440,CGLC490, CGLC570</p> <p>ASTM A755M,EN 10169</p>
Substrate Spec.	<p>JIS G3302: SGCC, SGCH,SGCD1, SGC340,SGC400, SGC440,SGC490, SGC570</p> <p>JIS G3317: SZACC, SZACH,SZACH1, SZAC340,SZAC400, SZAC440,SZAC490, SZAC570</p> <p>JIS G3321: SGLCC, SGLC400,SGLC440, SGLC490,SGLC570</p> <p>ASTM A653M: CS TYPE A, B, C FS TYPE A, B SS Grade 230, 255, 275, 340</p> <p>ASTM A875M ASTM A792M</p> <p>EN 10142: DX51D, DX52D,DX53D</p> <p>EN 10147: S220GD, S250GD,S280GD, S320GD,S350GD, S550GD</p> <p>EN 10214, EN 10215: S220GD DX51D,S250GD DX52D,S280GD DX53D,S320GD, S350GD, S555GD</p>

Other specification is available on customer's request





Coated Steel-GF/ PPGI/PPGL/PPGF-2

Application: PPGI/PPGL/PPGF(Pre-Painted)
Pre-painted Hot-dip Galvanized Steel Coil
Pre-painted Hot-dip 5% Al-Zn Coated Steel Coil
Pre-painted Hot-dip 55% Al-Zn Coated Steel Coil



Main Products

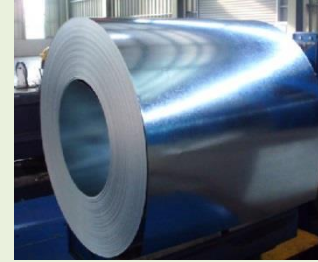
Specification	
Coating Designation	JIS G3302: Z10, Z12, Z18, Z20, Z22, Z25, Z27,Z35
	JIS G3317: Y12, Y18, Y20, Y22,Y25, Y27
	JIS G3321: AZ90, AZ120,AZ150, AZ170
	ASTMA653M: Z100, Z120, Z180,Z275, Z350
	ASTMA875M: ZGF90, ZGF135, ZGF180, ZGF225,ZGF275
	ASTMA792M: AZ150, AZ165, AZ180
	EN 10142: Z100, Z140, Z200,Z225, Z275
	EN 10147: Z100, Z140, Z200, Z225, Z275
	EN 10214: ZA95, ZA130, ZA185, ZA200, ZA255
EN 10215: ZA100, AZ150, AZ185	
Coating Thickness	Top Primer: PU or Epoxy 5um
	Top Coat: 15~25um
	Back Coat: PE or Epoxy 5~12um
Available Size	Pre-painted Hot-dip Galvanized Steel Coil Thickness: 0.2~1.5mm Width: 700~1534mm
	Pre-painted 5% Al-Zn Coated Steel Coil Thickness: 0.2~1.5mm Width: 700~1260mm
	Pre-painted 55% Al-Zn Coated Steel Coil Thickness: 0.2~1.25mm Width: 700~1220mm
	

Other specification is available on customer's request



Coated Steel-EGI

Application: EGI (Electro-galvanized)
Pre-painted Hot-dip Galvanized Steel Coil
Pre-painted Hot-dip 5% Al-Zn Coated Steel Coil
Pre-painted Hot-dip 55% Al-Zn Coated Steel Coil



Main Products

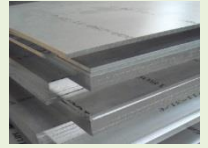
Specification	
Coating Designation	JIS G3302: Z10, Z12, Z18, Z20, Z22, Z25, Z27,Z35
	JIS G3317: Y12, Y18, Y20, Y22,Y25, Y27
	JIS G3321: AZ90, AZ120,AZ150, AZ170
	ASTMA653M: Z100, Z120, Z180,Z275, Z350
	ASTMA875M: ZGF90, ZGF135, ZGF180, ZGF225,ZGF275
	ASTMA792M: AZ150, AZ165, AZ180
	EN 10142: Z100, Z140, Z200,Z225, Z275
	EN 10147: Z100, Z140, Z200, Z225, Z275
	EN 10214: ZA95, ZA130, ZA185, ZA200, ZA255
EN 10215: ZA100, AZ150, AZ185	
Coating Thickness	Top Primer: PU or Epoxy 5um
	Top Coat: 15~25um
	Back Coat: PE or Epoxy 5~12um
Available Size	Pre-painted Hot-dip Galvanized Steel Coil Thickness: 0.2~1.5mm Width: 700~1534mm
	Pre-painted 5% Al-Zn Coated Steel Coil Thickness: 0.2~1.5mm Width: 700~1260mm
	Pre-painted 55% Al-Zn Coated Steel Coil Thickness: 0.2~1.25mm Width: 700~1220mm

Other specification is available on customer's request



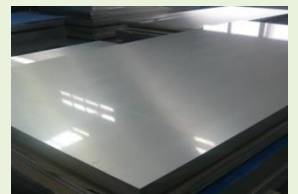
Aluminum-Coil/Foil/Plate

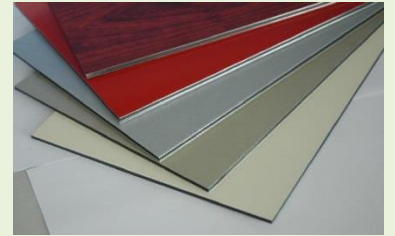
Application: Aluminum-Coil/Foil/Plate



Main Products

ITEMS	ALLOY	END USE	TEMPER	THICKNESS(MM)
1XXX SERIES	1050PS LITHO SHEET STOCK CTP CTP CTOCK	PRINTING	H18 H16	0.14—0.27
	1050 1060 1060 1070 1100 ANODIZING STOCK DEEP DRAW STOCK	COSMETIC CAP STOCK CAP STOCK ALUMINUM CIRCLE STOCK ACP STOCK TREAD PLATE SPECULAR SHEET CABINET SHEET LIGHTING COMPONENT STOCK CAPACITOR SHELL STOCK	ALL TEMPER	0.2—4.5
	1A99 1070 1235、1100 FOIL AND FOIL STOCK	CAPACITOR FOIL,HOUSEHOLD FOIL, FOIL STOCK	H14 H18	0.02—0.3
3XXX SERIES	3105 3003 3A21 3004 3005	BATTERY SHELL STOCK TREAD PLATE CABINET SHEET PRESSURE CONTAINER STOCK BEVERAGE CONTAINER STOCK HIGH PROFORMANCE DEEP DRAW MATERIAL	ALL TEMPER	0.2—4.5
	3003 CAPACITOR FOIL	CAPACITOR FOIL	H18	0.02—0.05
5XXX SERIES	5251 5052 5754 5182 5083 5005	ANODIZING MATERIAL,DEEP DRAW STOCK,TREAD PLATE,ELASTIC CAP STOCK,TRANSPORTATION	ALL TEMPER	0.3—100
6XXX SERIES	6061 6063 6A02	QUNCHED, PRE-STRACHED,TREAD PLATE	TX	0.3—200
4XXX SERIES, 7XXX SERIES	4343、4004、4104 7072	CLADDING FOIL, SHEET, AND PLATE	ALL TEMPER	30—90
8XXX SERIES	8011 8021 8079 FOIL AND FOIL STOCK	BEVERAGE FOIL CABLE FOIL BLISTER FOIL HOUSEHOLD FOIL CONTAINER FOIL PP CAP STOCK FOIL STOCK	ALL TEMPER	0.01—0.3





Aluminum-Color Coated

Application: Color Coated GI

Main Products

Specification	
Coating finish:	PVDF, POLYESTER, ACRYLIC
Aluminum thickness:	0.024mm-1.20mm
Standard width:	Standard width: 1240mm Special width: 50mm-1700m
Coating thickness:	Coating thickness: PVDF \geq 25micron POLYESTER \geq 18micron
Coating hardness (pencil hardness):	More than 2H
Impact resistance:	No cracking and peeling (50kg/cm,ASTMD-2794:1993)
Coating adhesion:	No lower than first grade
Coils core diameter:	150mm ,405mm, 505mm, 508mm, 510mm
Gloss:	10-90%
Flexibility MEK resistance:	More than 100 times

Other specification is available on customer's request





Aluminum-Flat/Long

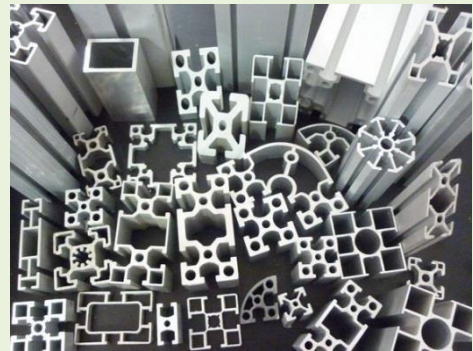
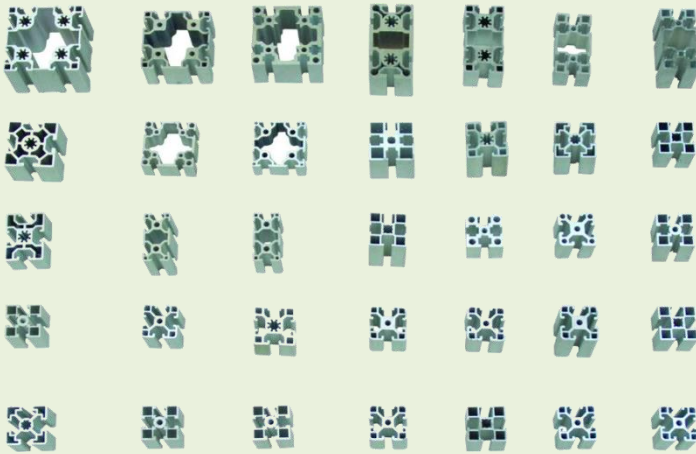
Application: Flat/Long



Main Products

Specification	
Aluminum rod & bar product	Grade: 1x, 2x, 3x, 4x, 5x, 6x, 7x series
	Specification: GB/T3191, GJB2054 ASTM
Aluminum tube & pipe product:	Diameter: 6~120 mm
	Temper: 2x, 4x, 6x, 7x series: H112, F, O, T4, T6 1x, 3x, 5x series: H112, O, F
	Grade: 1x, 2x, 3x, 4x, 5x, 6x, 7x ,8x series
	Specification: GB/T6893, GJB2381, GB4437, B/T4437.1 ASTM
	Size: OD6~180 mm x WT0.5~40 mm
	Temper: O, F, H14, H34, H32, H112, T4, T6

Other specification is available on customer's request





Bar/Wire/Rod-Stainless Steel-1



Application: Stainless Steel Bar/Wire/Rod-1

Main Products

Specification		
Hot Rolled Bar	AISI/ASTM : 304 316L 303 304 304N 304L 304LN 316 316N 316L	
Peeled Round Bar	316LN 430 430F 403 410 416	
Cold Drawn Round Bar	DIN: 10CrNiS189,5CrNi1810,2CrNi1911,2CrNiN1810,5CrNiMo1712	
Cold Drawn Square Bar	2, 2CrNiMo17132,2CrNiMoN17122,6Cr17,6CrMoS17,12Cr13	
Cold Drawn Hexagon Bar	1.4305,1.4301,1.4306,1.4311,1.4401,1.4404,1.4406,1.4016,1.4105,1.4	
Centreless Grinding Round Bar	006	
Available Size Round bar	Hot Rolled Round Bar: 12~200mm	
	Peeled Round Bar: 19~160mm	
	Cold Drawn Round Bar: 4.76~100mm	
	Cold Drawn Square Bar: 4.76~76.2mm	
	Cold Drawn Hexagon Bar: 4.76~76mm	
	Centreless Grinding Round Bar: 4.76~101mm	
Available Size Flat Bar	Thickness (mm) width (mm)	
	1.5	12
	1.5~3.0	10~200
	4.0~5.0	16~200
	6.0	19~200
	8.0~9.0	25~200
	10.0~12	30~200
	14.0	35~200
	15.0~16.0	40~200



Other specification is available on customer's request



Bar/Wire/Rod-Stainless Steel-2

Application: **Stainless Steel Bar/Wire/Rod-2**

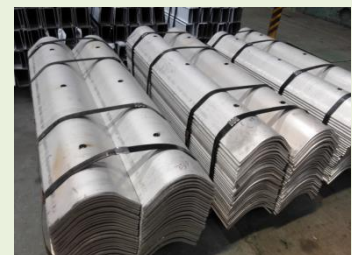


Main Products

Specification		
	Thickness (mm)	width (mm)
Stainless Steel Angle Bar	2.0	15
	3.0~4.5	25
	5.0~6.0	30
	8.0	53
	9.0~10.0	62
	12.0	75
	14.0~16.0	94



Other specification is available on customer's request





Bar/Wire/Rod-Carbon Steel

Application: Carbon Steel Bar/Wire/Rod

Main Products

Specification	
Hot Rolled Round Bar	AISI 1008, 1015, 1017, 1021, 1025, 1026, 1035, 1045,
Cold Drawn Square Bar	1050, 1055, 4140, 4340, 4130, 5140, 8620, 12L14
Hot Rolled Square Bar	JIS SCM415, JIS SCM420, JIS SCM440, SS400, S45C
Cold Drawn Hexagon Bar	DIN 34CrMo4, 9Cr2Mo, 40CrNiMo, C45, CK45
Cold Drawn Round Bar	GB Q215~Q235
Forged Bar	
Available Size	Diameter (mm)
	Hot Rolled Round Bar 25~600
	Hot Rolled Square Bar 8.5~120
	Cold Drawn Round Bar 6~101.6
	Cold Drawn Square Bar 6~50.8
	Cold Drawn Hexagon Bar 9.5~65
Forged Bar 200~1000	

Other specification is available on customer's request





Bar/Wire/Rod-Alloy Steel



Application: **Stainless Steel Bar/Wire/Rod-1**

Main Products

Specification	
Grade Standard	SAE / AISI / ASTM A2 / D2 / D3 / H21 / H13 / H10 / T1 / M2 / M35
Available Size	<p>Round Bar : OD : 3 ~ 600mm, cold-drawing, hot-rolled, hot-forged</p> <p>Flat Bar : TH 10 ~ 90mm * Width 60 ~ 550mm * Length 2,500 ~ 5,800 mm</p> <p>Black : TH 100 ~ 700mm * Width 100 ~ 1,300mm * Length 500 ~ 5,800 mm</p> <p>Commercial Forged Steel: OD : 70 ~ 200mm, Length : 3 ~ 12M</p> <p>Condition: Annealing, Normalized, Quench + Temper</p> <p>Surface : Black Finish, Peeled, Rough Turned</p>

Other specification is available on customer's request



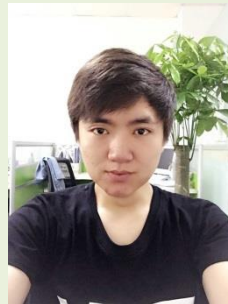
Partners



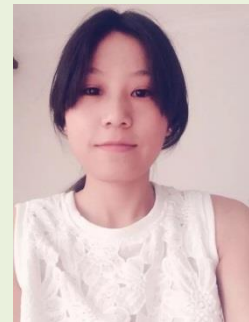
HXM-Family



Bonnie



Can



Joice



Maggie



Tristan



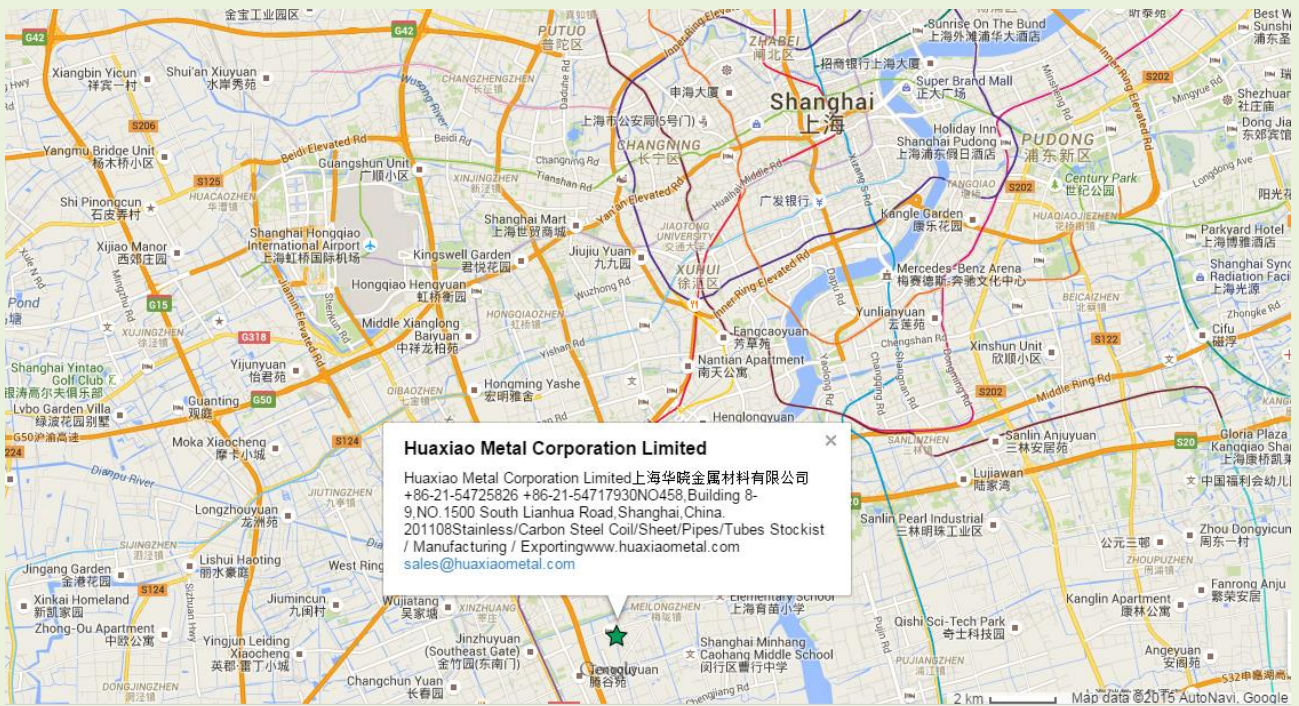
Zed

Huaxiao Metal Corporation Limited
Huaxia International Steel Corporation Limited

Tel: +86-21-54725826 Fax: +86-21-54725826-8007/8011

Add: NO458, Building 8-9, NO.1500 South Lianhua Road, Shanghai, China. 201108

sales@huaxiaometal.com www.huaxiaometal.com



Huaxiao Metal Corporation Limited

Tel: +86-21-54725826 Fax: +86-21-54725826-8007/8011
 NO.458, Building 8-9, NO.1500 South Lianhua Road, Shanghai, China. 201108
 sales@huaxiaometal.com www.huaxiaometal.com