

FUTURE YOU CREATE, METAL WE MAKE.

HUAXIAO METAL

STAINLESS STEEL SOLUTION

Head Office Shanghai: Room 557, Building 3, Wuxin Hefeng Plaza, No. 1388 Jiangyue Road, Minhang District, Shanghai, China, 201114

Branch Office Tangshan: Room 2008, Building 11, Evergrande Plaza, Tangshan City, Hebei Province, China, 63009

Branch Office Foshan: No. 38 Fochen Road, Shunde District, Foshan City, Guangdong Province

Branch Office Wuxi: No. 289 Fangcheng Avenue, Xinwu District, Wuxi City, Jiangsu Province

Website:



Wechat:



Whatsapp:



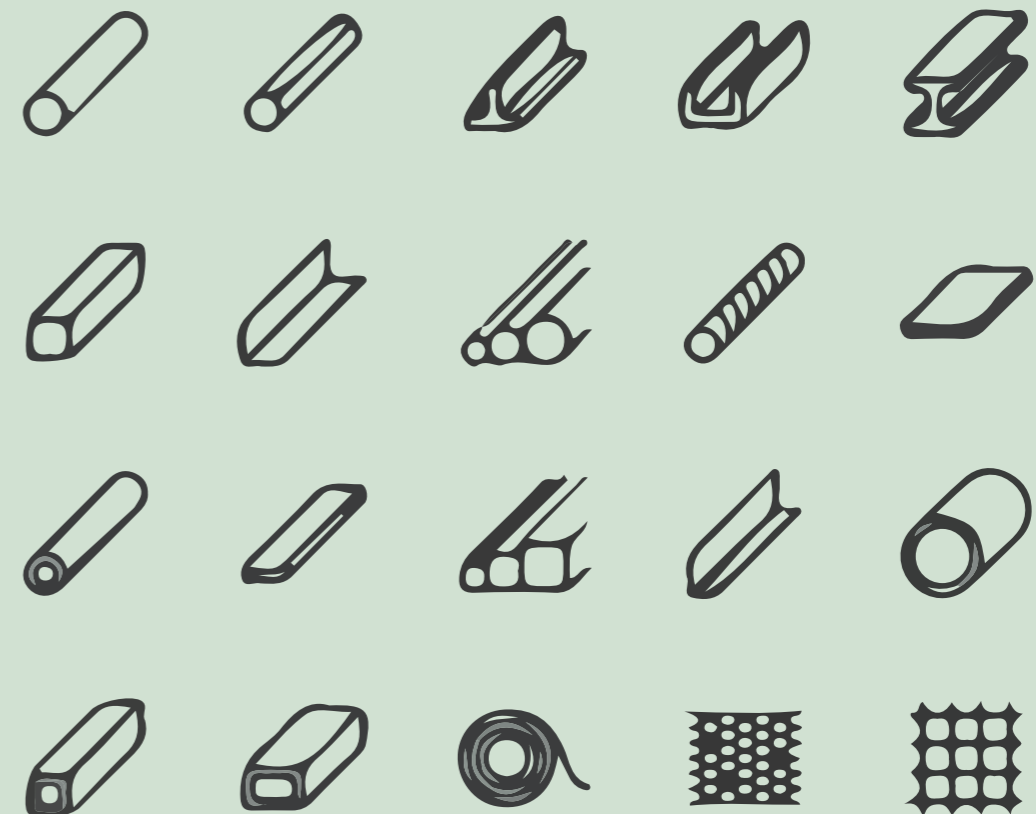
TEL: +86-21-54725826

FAX: +86-21-54717930

EMAIL: sales@huaxiaometal.com

www.huaxiaometal.com

www.huaxiao-ss.com



CONTENTS

目录

01

Company Profile

02

Company Culture

03

Our Dream

04

Our Certificates

05

Our Factory

06

Our Products

13 Stainless Steel Sheet/Coil

31 Stainless Steel Strip

33 Stainless Steel Profiles

43 Stainless Steel Tube

51 Stainless Steel Wire

53 Customized Stainless Steel Products

07

Our Package

08

Our Team



Part 1 COMPANY PROFILE

I 公司简介

华 光泽 美丽
光彩 繁荣

晓 破晓 光明

There is a profound story behind the name of Huaxiao Metal, which represents our company's core values and mission.

HXM can be elaborated as Huaxiao Metal. In China, the Chinese character 'Hua' symbolizes luster, beauty, brilliance and prosperity. And the Chinese character 'Xiao' symbolizes the breaking of dawn and light.

On the other hand, HXM can also be described as Huaxia Metal. 'Huaxia' symbolizes China to some extent.

HXM has high hopes placed on its founder Tristan. He hopes that the company can use metal raw materials with different lusters as its main products, continue to grow bigger and stronger, and eventually represent China and go to the world.

HXM also conveys our company's mission: to help customers embrace a new dawn in the field of metal materials and realize their projects and dreams through unremitting efforts and professional knowledge.

The story begins with the company founder Tristan, who has many years of experience in the metal materials industry. He has always dreamed of creating an excellent metal materials company that can provide high-quality metal materials to global customers and connect China's manufacturing capabilities with the global market. Tristan is a visionary who believes that by providing superior products and services, he can build an impactful company in this highly competitive industry.

Over time, HXM Company gradually emerged and became a leader in the field of stainless steel, carbon steel and aluminum material suppliers. Our products are widely used in construction, manufacturing, energy, aerospace and other fields, and have been highly recognized and trusted by customers around the world.

He faced many challenges at the beginning of starting the company, but his persistence and persistence pushed him forward. He sources the highest quality products from the supply chain of stainless steel, carbon steel and aluminum materials, establishes close cooperative relationships with customers around the world, and ensures that products meet international standards and customers' high requirements. He also invests a lot of time and energy in cultivating the team to ensure that the company has the most professional talents who can provide excellent technical support and consulting services.

HUAXIAO METAL

Tristan's vision in the early days of the company has been realized. He has successfully connected China's metal material manufacturing industry with the global market and provided customers with excellent metal material solutions.

At HXM Company, we firmly believe that materials are the cornerstone of the world, and our name reflects our commitment to this mission.

We will continue to work hard to provide customers with the highest quality metal materials, while adhering to the founder's dream and creating new possibilities for the future of the metal materials industry. Thank you for choosing HXM.

Future you create, metal we make.





CUSTOMER FIRST, ULTIMATE SERVICE.
客户第一，极致服务。

故事始于公司创始人 Tristan，他在金属材料行业拥有多年的经验，他一直梦想着创建一家出色的金属材料公司，为全球客户提供高品质的金属材料，并将中国的制造能力与全球市场连接起来。Tristan 是一个有远见卓识的人，他相信，通过提供卓越的产品和服务，他可以在这个竞争激烈的行业中建立起一家有影响力的公司。

在创办公司之初，他面临了许多挑战，但他的坚持和执着推动着他前进。他从不锈钢、碳钢和铝材料的供应链中寻找最高品质的产品，与世界各国客户建立了密切的合作关系，并确保产品符合国际标准和客户的高要求。他也投入了大量的时间和精力培养团队，确保公司拥有最专业的人才，可以提供卓越的技术支持和咨询服务。随着时间的推移，上海华晓金属材料公司逐渐崭露头角，成为了不锈钢、碳钢和铝材料供应商领域的领导者。我们的产品被广泛用于建筑、制造、能源、航空航天等领域，并得到了全球客户的高度认可和信赖。

Tristan 在公司创办初期的愿景已经实现，他成功地将中国的金属材料制造业与全球市场联系在一起，并为客户提供了卓越的金属材料解决方案。在上海华晓金属材料公司，我们深信，材料是构建世界的基石，我们的名字反映了我们对这一使命的承诺。

我们将继续努力，为客户提供最高质量的金属材料，同时秉持着创始人的梦想，为金属材料行业的未来开创新的可能性。感谢您选择上海华晓金属材料公司，让我们一起共创美好的未来。



COMPANY PROFILE

公司简介

上海华晓金属材料公司的名字背后蕴含着深刻的故事，这个名字代表着我们公司的核心价值观和使命。

HXM 可以被阐述为 Huaxiao Metal。在中国，华这个汉字象征光泽、美丽光彩和繁荣。晓这个汉字象征破晓和光明。另一方面 HXM 也可以被阐述为 Huaxia Metal。Huaxia 在某种程度上象征着中国。

HXM 被寄予了创始人的厚望，他希望公司能以闪耀着不同光泽的金属原材料为公司主营产品，不断做大做强，最后能代表中国，走向世界。华晓二字也传达了我们的使命：通过不懈努力和专业知识，帮助客户在金属材料领域迎接新的黎明，实现他们的项目和梦想。

ONLY BY BEING ALTRUISTIC CAN WE ACHIEVE A WIN-WIN SITUATION.
利他，共赢。

Part 2

COMPANY CULTURE

I 企业文化

COMPANY VISION

公司愿景

Future you create, metal we make.

To be a globally leading and trusted one-stop service provider for metal.

BUSINESS PHILOSOPHY

经营理念

Only by being altruistic can we achieve a win-win situation.

利他，共赢。

CORE VALUES

核心价值观

To be Reliable:

Everything has an explanation, everything has a place, and everything has an echo.

靠谱：凡事有交代，件件有着落，事事有回音。

SERVICE PURPOSE

服务宗旨

Customer first, ultimate service.

客户第一，极致服务。

EMPLOYEE ETHICS

员工宗旨

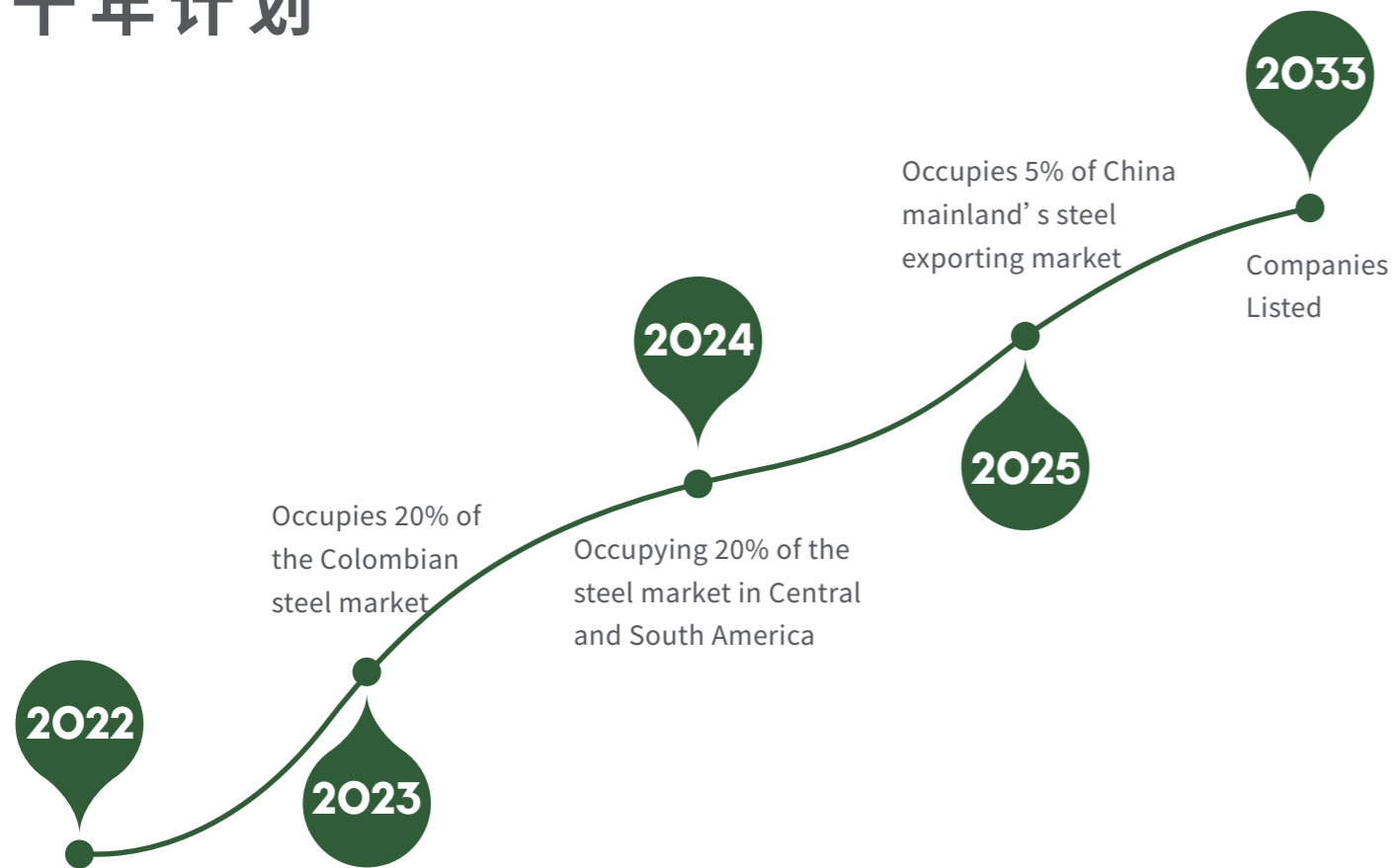
Maintain an open mindset, efficient execution, honesty and trustworthiness, and devote 101 degrees of enthusiasm to work, in order to continuously surpass.

保持开放心态、高效执行、诚实守信、并将101度的热情投入工作中，以期不断超越。

Part 3 OUR DREAM

I 公司愿景

TEN-YEAR PLAN 十年计划



Part 4 OUR CERTIFICATES

荣誉证书 I



Part 5

OUR FACTORY 公司工厂 I

Brushed Coil&Plate
拉丝&油磨



Hot Rolled Continuous Mill Plate
热轧开平



Checker Plate
防滑板



Mirror Sheet
不锈钢镜面板产线



Cold Rolled Continuous Mill Plate
冷轧开平



Stainless Steel Strip
窄带分条



Part 6

OUR PRODUCTS

产品介绍 I

A. STAINLESS STEEL SHEET/COIL

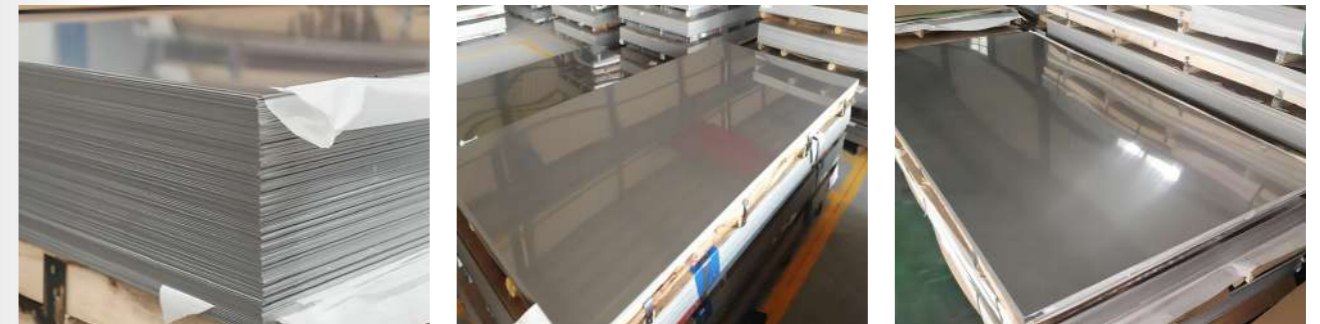
COLD ROLLED STAINLESS STEEL SHEET/COIL

SPECIFICATION

| | | |
|------------------|--|---|
| Standard & Grade | ASTM: A240 SA24 S30100 S30400 S30403 S31008 S31603 S32100 S41008 S43000 S43932 S44400 S44500 | |
| | JIS: G4304 G4305 G4312 SUS301 SUS304 SUS304L SUS310 SSUS316LSUS321 SUH409LSUS410S SUS420J2 SUS430 | |
| | AISI: 301 304 304L 310S 316L 321 409L 410S 430 439 441 444 445 | |
| | EN: 10088-2 17224 17440 17441 1.4310 1.4301 1.4306 1.4845 1.4404 1.4541 1.4512.4000 1.4028 1.4016 1.4509 | |
| | Mill's Standard: 201 202 204Cu3 L1 L4 | |
| Available Size | Sheet: Thickness: 0.3-3.0 mm Width: 914,1000,1219,1250,1500,1524,1800,2000 mm Length: 2000,2438,2500,3000,3048,6069,10000 Finish: No.1, 2B, BA, No.3, No.4, No.5, No.8, HL, Etching, SB,Back Pass Ti-coating Protect Film: PVC, PE, LASER-PVC, Black-White, Blue-White, 20um-120um | Coil: Thickness: 0.05-3.0 mm Width: 600-2000mm Finish: 2B,2D,BA,No.3,No.4,No.5,SB, HL |
| | Other specification is available on customers' requests. | |

Cold Rolled Stainless Steel Sheet

冷轧不锈钢板



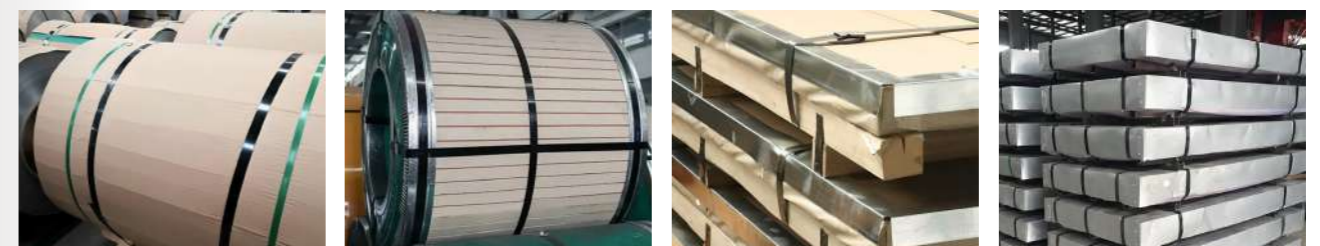
Cold Rolled Stainless Steel Coil

冷轧不锈钢卷



Cold Rolled Stainless Steel Packaging

冷轧不锈钢包装



Cold Rolled Stainless Steel Applications

冷轧不锈钢应用



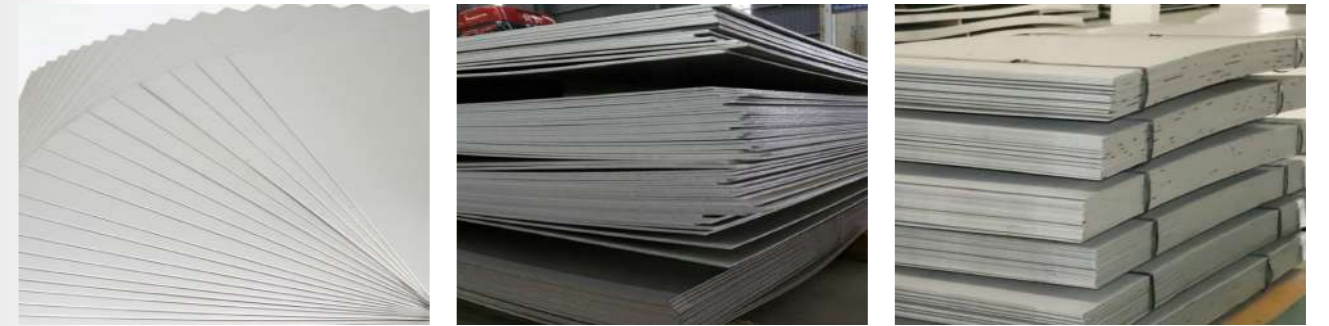
STAINLESS STEEL SHEET/COIL

HOT ROLLED STAINLESS STEEL PLATE/COIL

SPECIFICATION

| | | |
|------------------|---|---|
| Standard & Grade | ASTM: A240 SA24 S30100 S30400 S30403 S31008 S31603 S32100 S41008 S43000 S43932 S44400 S44500 | |
| | JIS: G4304 G4305 G4312 SUS301 SUS304 SUS304L SUS310 SSUS316L SUS321 SUH409L SUS410S SUS420J2 SUS430 | |
| | AISI: 301 304 304L 310S 316L 321 409L 410S 430 439 441 444 445 | |
| | EN: 10088-2 17224 17440 17441 1.4310 1.4301 1.4306 1.4845 1.4404 1.4541 1.45121.4000 1.4028 1.4016 1.4509 | |
| | Mill's Standard: 201 202 204Cu3 L1 L4 | |
| Available Size | Coil: Thickness: 2.5-16mm Width: 600-2000mm ID: 610mm Finish: NO.1 | Plate: Thickness: 3-100mm Width: 914,1000,1219,1250,1500,1524,1800,2000,2500,2800,3000 mm Length: 2000,2438,2500,3000,3048,6069,10000,12000 Finish: NO.1,Black |
| | Other specification is available on customers' requests. | |

Hot Rolled Stainless Steel Plate 热轧不锈钢板



Hot Rolled Stainless Steel Coil 热轧不锈钢卷



Hot Rolled Stainless Steel Packaging 热轧不锈钢包装



Hot Rolled Stainless Steel Applications 热轧不锈钢应用

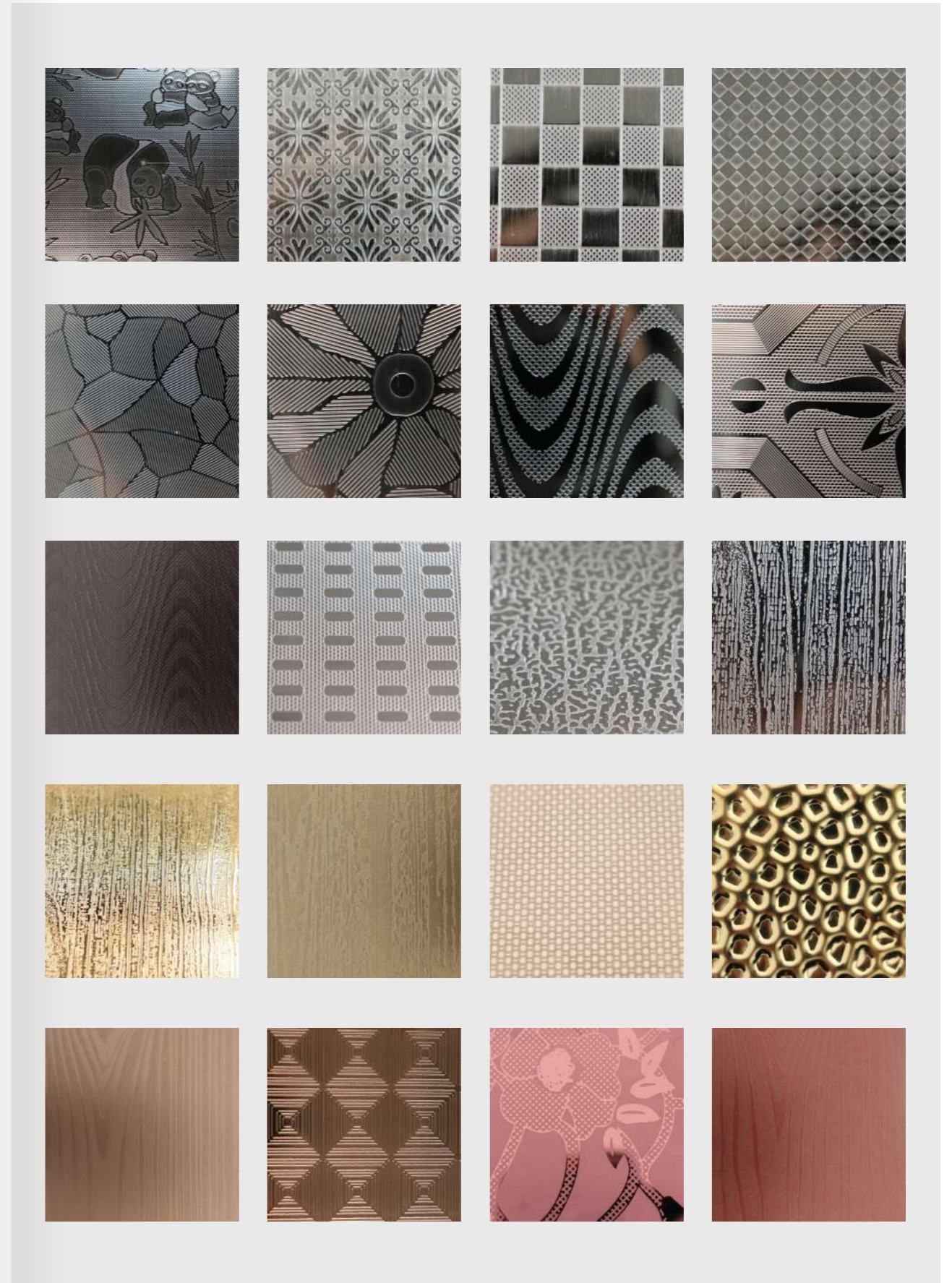


DECORATIVE STAINLESS STEEL SHEET

EMBOSSED STAINLESS STEEL SHEET

SPECIFICATION

| | |
|--|---|
| Standard & Grade | ASTM: A240 SA24 S30100 S30400 S30403 S31008 S31603 S32100 S41008 S43000 S43932 S44400 S44500 |
| | JIS: G4304 G4305 G4312 SUS301 SUS304 SUS304L SUS310 SSUS316LSUS321 SUH409LSUS410S SUS420J2 SUS430 |
| | AISI: 301 304 304L 310S 316L 321 409L 410S 430 439 441 444 445 |
| | EN: 10088-2 17224 17440 17441 1.4310 1.4301 1.4306 1.4845 1.4404 1.4541 1.45121.4000 1.4028 1.4016 1.4509 |
| | Mill's Standard: 201 202 204Cu3 L1 L4 |
| Available Size | Thickness: 3mm-6mm |
| | Width: 914,1000,1219,1250,1500,1524,1800,2000 mm |
| | Length: 500-12000mm |
| Other specification is available on customers' requests. | |



DECORATIVE STAINLESS STEEL SHEET

ETCH STAINLESS STEEL SHEET

SPECIFICATION

| | |
|--|---|
| Standard & Grade | ASTM: A240 SA24 S30100 S30400 S30403 S31008 S31603 S32100 S41008 S43000 S43932 S44400 S44500 |
| | JIS: G4304 G4305 G4312 SUS301 SUS304 SUS304L SUS310 SSUS316LSUS321 SUH409LSUS410S SUS420J2 SUS430 |
| | AISI: 301 304 304L 310S 316L 321 409L 410S 430 439 441 444 445 |
| | EN: 10088-2 17224 17440 17441 1.4310 1.4301 1.4306 1.4845 1.4404 1.4541 1.45121.4000 1.4028 1.4016 1.4509 |
| | Mill's Standard: 201 202 204Cu3 L1 L4 |
| Available Size | Thickness: 0.8-2.0mm |
| | Width: 914,1000,1219,1250,1500,1524,1800,2000mm |
| | Length: 500-6000mm |
| Other specification is available on customers' requests. | |

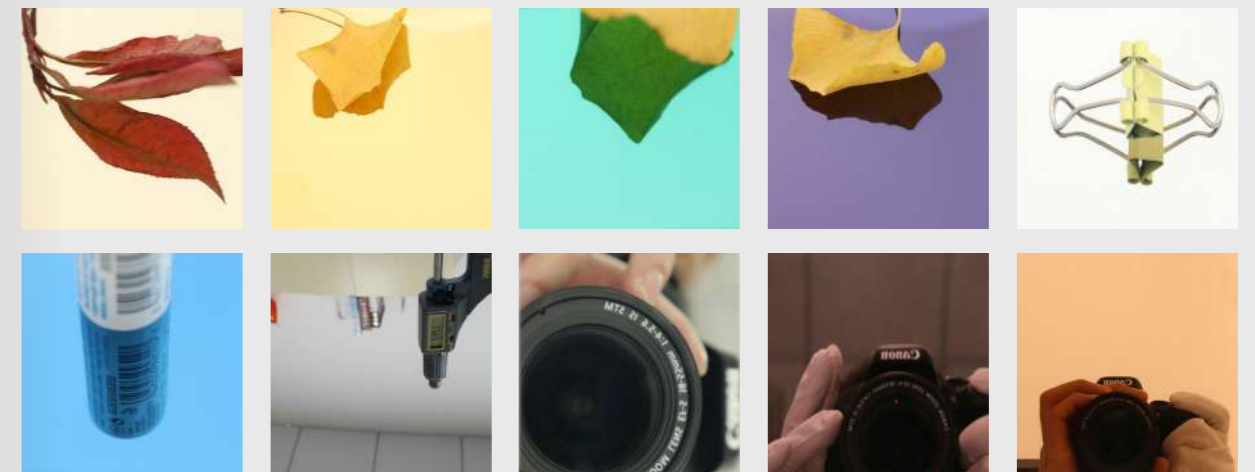


DECORATIVE STAINLESS STEEL SHEET

MIRROR STAINLESS STEEL SHEET

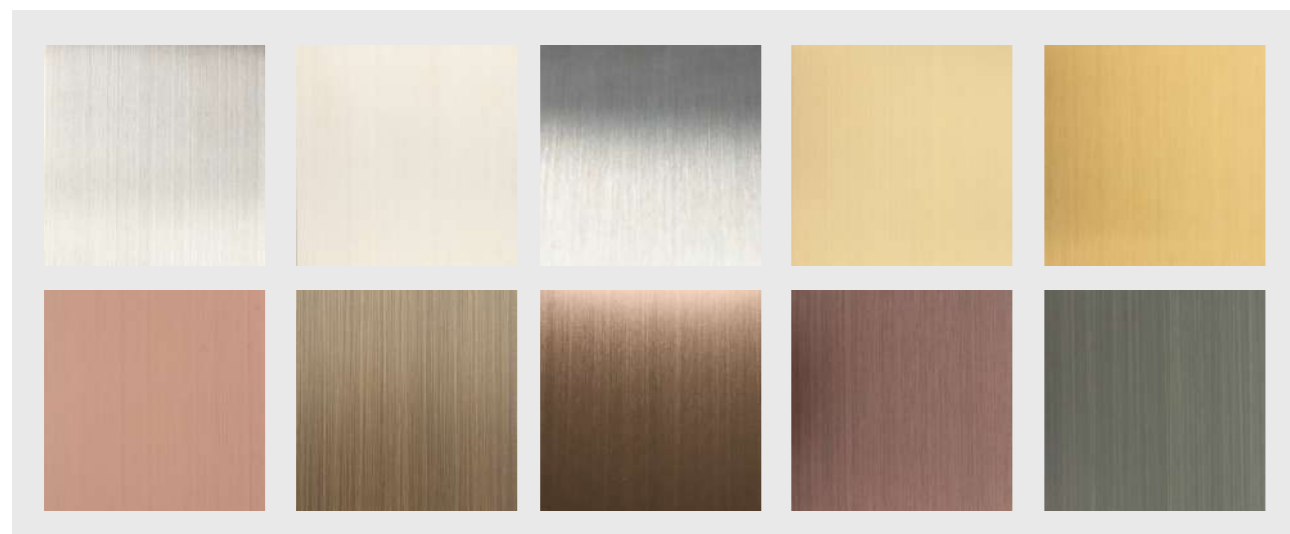
SPECIFICATION

| | |
|--|---|
| Standard & Grade | ASTM: A240 SA24 S30100 S30400 S30403 S31008 S31603 S32100 S41008 S43000 S43932 S44400 S44500 |
| | JIS: G4304 G4305 G4312 SUS301 SUS304 SUS304L SUS310 SSUS316LSUS321 SUH409L SUS410S SUS420J2 SUS430 |
| | AISI: 301 304 304L 310S 316L 321 409L 410S 430 439 441 444 445 |
| | EN: 10088-2 17224 17440 17441 1.4310 1.4301 1.4306 1.4845 1.4404 1.4541 1.45121.4000 1.4028 1.4016 1.4509 |
| | Mill's Standard: 201 202 204Cu3 L1 L4 |
| Available Size | Thickness: 0.5-5.0mm |
| | Width: 914,1000,1219,1250,1500,1524,1800,2000 mm |
| | Length: 500-12000mm |
| Other specification is available on customers' requests. | |



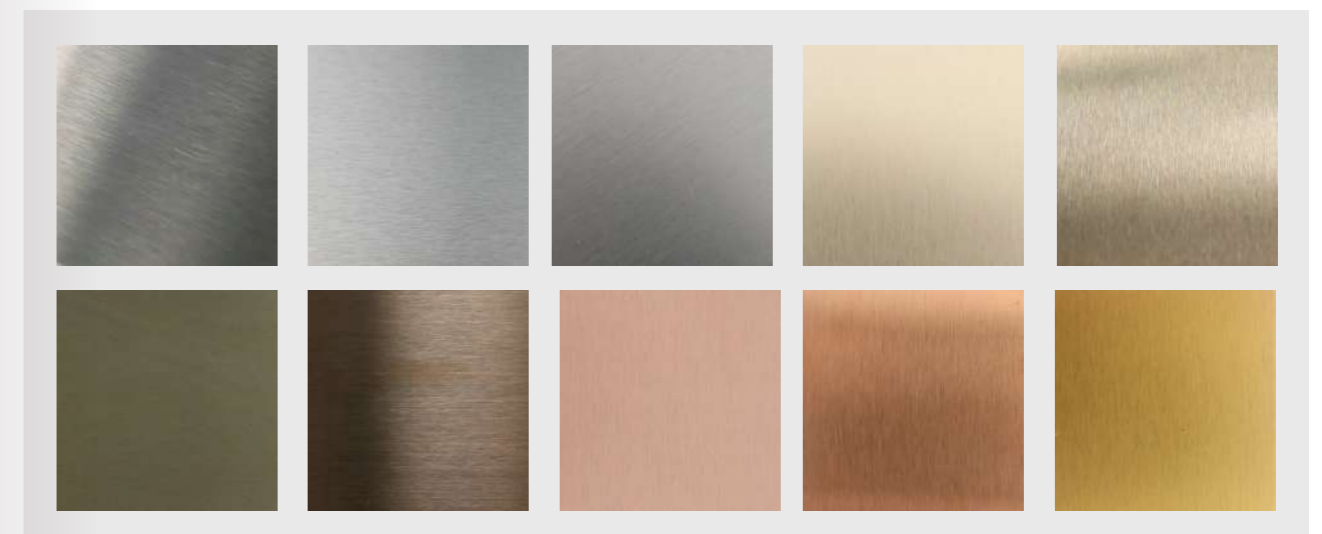
DECORATIVE STAINLESS STEEL SHEET

| HL STAINLESS STEEL SHEET | |
|--------------------------|---|
| SPECIFICATION | |
| Standard & Grade | ASTM: A240 SA24 S30100 S30400 S30403 S31008 S31603 S32100 S41008 S43000 S43932 S44400 S44500 |
| | JIS: G4304 G4305 G4312 SUS301 SUS304 SUS304L SUS310 SSUS316LSUS321 SUH409LSUS410S SUS420J2 SUS430 |
| | AISI: 301 304 304L 310S 316L 321 409L 410S 430 439 441 444 445 |
| | EN: 10088-2 17224 17440 17441 1.4310 1.4301 1.4306 1.4845 1.4404 1.4541 1.45121.4000 1.4028 1.4016 1.4509 |
| | Mill's Standard: 201 202 204Cu3 L1 L4 |
| Available Size | Thickness: 0.8-3.0mm |
| | Width: 500,914,1000,1219,1250,1500,1524,1800,2000 mm |
| | Length: 500-12000mm |
| | Other specification is available on customers' requests. |



DECORATIVE STAINLESS STEEL SHEET

| NO.4 STAINLESS STEEL SHEET | |
|----------------------------|---|
| SPECIFICATION | |
| Standard & Grade | ASTM: A240 SA24 S30100 S30400 S30403 S31008 S31603 S32100 S41008 S43000 S43932 S44400 S44500 |
| | JIS: G4304 G4305 G4312 SUS301 SUS304 SUS304L SUS310 SSUS316LSUS321 SUH409LSUS410S SUS420J2 SUS430 |
| | AISI: 301 304 304L 310S 316L 321 409L 410S 430 439 441 444 445 |
| | EN: 10088-2 17224 17440 17441 1.4310 1.4301 1.4306 1.4845 1.4404 1.4541 1.45121.4000 1.4028 1.4016 1.4509 |
| | Mill's Standard: 201 202 204Cu3 L1 L4 |
| Available Size | Thickness: 0.8-3.0mm |
| | Width: 500,914,1000,1219,1250,1500,1524,1800,2000 mm |
| | Length: 500-12000mm |
| | Other specification is available on customers' requests. |



DECORATIVE STAINLESS STEEL SHEET

CURLY GRAIN STAINLESS STEEL SHEET

SPECIFICATION

| | |
|--|--|
| Standard & Grade | ASTM: A240 SA24 S30100 S30400 S30403 S31008 S31603 S32100 S41008 S43000 S43932 S44400 S44500 |
| | JIS: G4304 G4305 G4312 SUS301 SUS304 SUS304L SUS310 SSUS316LSUS321 SUH409LSUS410S SUS420J2 SUS430 |
| | AISI: 301 304 304L 310S 316L 321 409L 410S 430 439 441 444 445 |
| | EN: 10088-2 17224 17440 17441 1.4310 1.4301 1.4306 1.4845 1.4404 1.4541 1.45121 .4000 1.4028 1.4016 1.4509 |
| | Mill's Standard: 201 202 204Cu3 L1 L4 |
| Available Size | Thickness: 0.5-3.0mm |
| | Width: 914,1000,1219,1250,1500,1524,1800,2000 mm |
| | Length: 500-12000mm |
| Other specification is available on customers' requests. | |

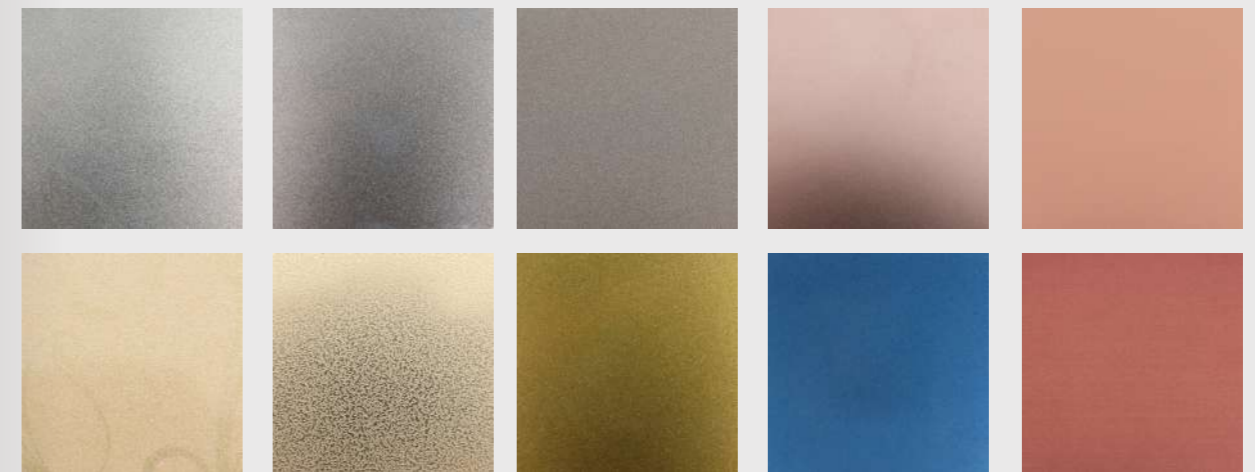


DECORATIVE STAINLESS STEEL SHEET

SAND BLAST STAINLESS STEEL SHEET

SPECIFICATION

| | |
|--|--|
| Standard & Grade | ASTM: A240 SA24 S30100 S30400 S30403 S31008 S31603 S32100 S41008 S43000 S43932 S44400 S44500 |
| | JIS: G4304 G4305 G4312 SUS301 SUS304 SUS304L SUS310 SSUS316LSUS321 SUH409LSUS410S SUS420J2 SUS430 |
| | AISI: 301 304 304L 310S 316L 321 409L 410S 430 439 441 444 445 |
| | EN: 10088-2 17224 17440 17441 1.4310 1.4301 1.4306 1.4845 1.4404 1.4541 1.45121 .4000 1.4028 1.4016 1.4509 |
| | Mill's Standard: 201 202 204Cu3 L1 L4 |
| Available Size | Thickness: 0.5-3.0mm |
| | Width: 914,1000,1219,1250,1500,1524,1800,2000 mm |
| | Length: 500-12000mm |
| Other specification is available on customers' requests. | |

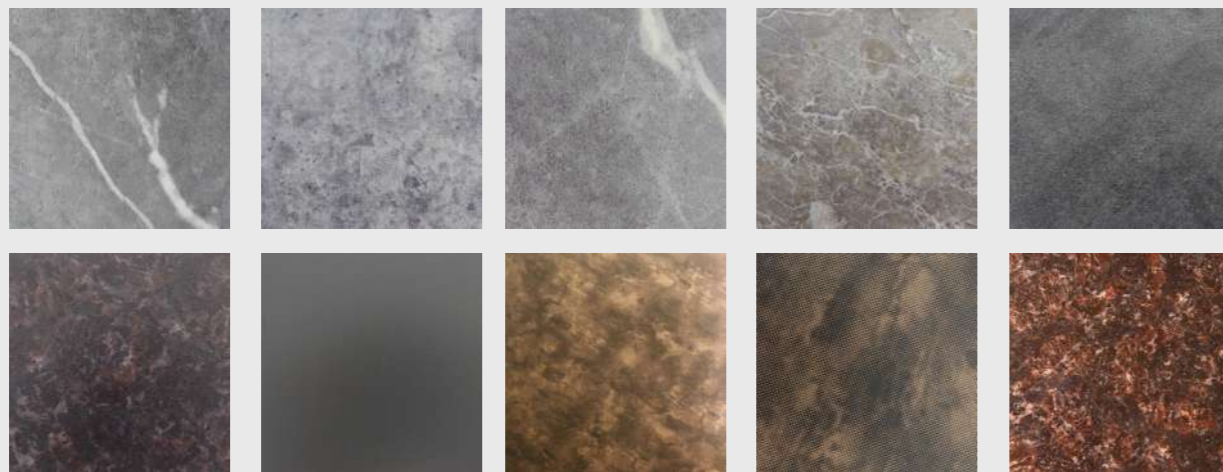


DECORATIVE STAINLESS STEEL SHEET

LAMINATE ROCK PATTERN STAINLESS STEEL SHEET

SPECIFICATION

| | |
|--|--|
| Standard & Grade | ASTM: A240 SA24 S30100 S30400 S30403 S31008 S31603 S32100 S41008 S43000 S43932 S44400 S44500 |
| | JIS: G4304 G4305 G4312 SUS301 SUS304 SUS304L SUS310 SSUS316LSUS321 SUH409LSUS410S SUS420J2 SUS430 |
| | AISI: 301 304 304L 310S 316L 321 409L 410S 430 439 441 444 445 |
| | EN: 10088-2 17224 17440 17441 1.4310 1.4301 1.4306 1.4845 1.4404 1.4541 1.45121 .4000 1.4028 1.4016 a.1.4509 |
| | Mill's Standard: 201 202 204Cu3 L1 L4 |
| Available Size | Thickness: 0.5-3.0mm |
| | Width: 914,1000,1219,1250,1500,1524,1800,2000 mm |
| | Length: 500-12000mm |
| Other specification is available on customers' requests. | |



DECORATIVE STAINLESS STEEL SHEET

LAMINATE WOOD GRAIN STAINLESS STEEL SHEET

SPECIFICATION

| | |
|--|--|
| Standard & Grade | ASTM: A240 SA24 S30100 S30400 S30403 S31008 S31603 S32100 S41008 S43000 S43932 S44400 S44500 |
| | JIS: G4304 G4305 G4312 SUS301 SUS304 SUS304L SUS310 SSUS316LSUS321 SUH409LSUS410S SUS420J2 SUS430 |
| | AISI: 301 304 304L 310S 316L 321 409L 410S 430 439 441 444 445 |
| | EN: 10088-2 17224 17440 17441 1.4310 1.4301 1.4306 1.4845 1.4404 1.4541 1.45121 .4000 1.4028 1.4016 1.4509 |
| | Mill's Standard: 201 202 204Cu3 L1 L4 |
| Available Size | Thickness: 0.5-3.0mm |
| | Width: 914,1000,1219,1250,1500,1524,1800,2000 mm |
| | Length: 500-12000mm |
| Other specification is available on customers' requests. | |

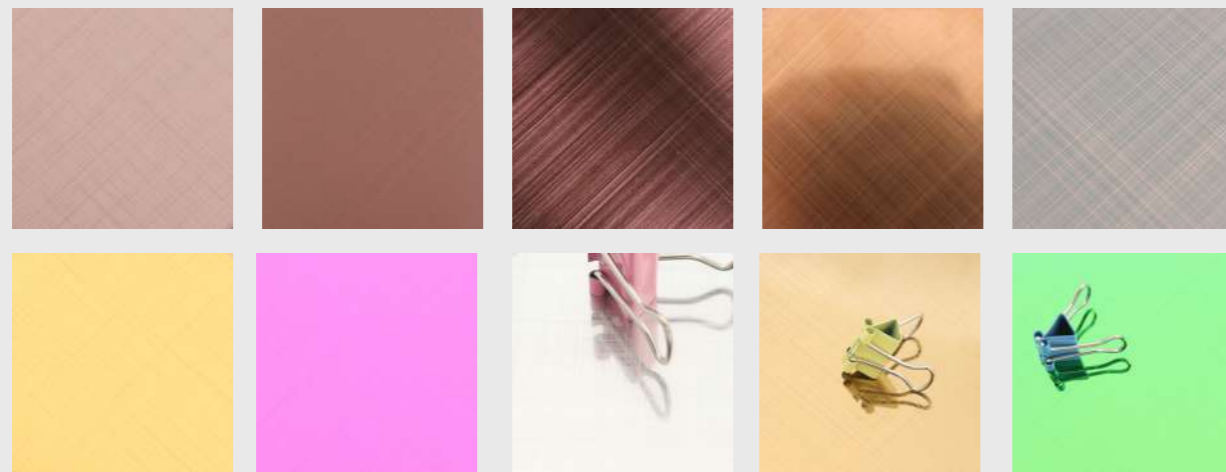


DECORATIVE STAINLESS STEEL SHEET

CROSS GRAIN STAINLESS STEEL SHEET

SPECIFICATION

| | |
|------------------|--|
| Standard & Grade | ASTM: A240 SA24 S30100 S30400 S30403 S31008 S31603 S32100 S41008 S43000 S43932 S44400 S44500 |
| | JIS: G4304 G4305 G4312 SUS301 SUS304 SUS304L SUS310 SSUS316LSUS321 SUH409LSUS410S SUS420J2 SUS430 |
| | AISI: 301 304 304L 310S 316L 321 409L 410S 430 439 441 444 445 |
| | EN: 10088-2 17224 17440 17441 1.4310 1.4301 1.4306 1.4845 1.4404 1.4541 1.45121 .4000 1.4028 1.4016 1.4509 |
| | Mill's Standard: 201 202 204Cu3 L1 L4 |
| Available Size | Thickness: 0.5-3.0mm |
| | Width: 914,1000,1219,1250,1500,1524,1800,2000 mm |
| | Length: 500-12000mm |
| | Other specification is available on customers' requests. |

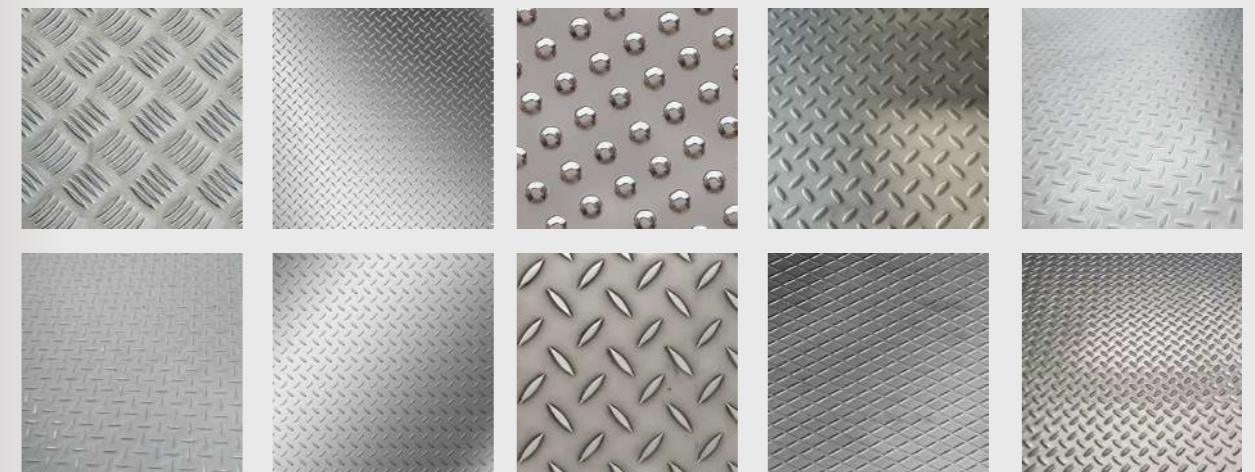


DECORATIVE STAINLESS STEEL SHEET

STAINLESS STEEL CHECKER PLATE

SPECIFICATION

| | | |
|------------------|--|--|
| Standard & Grade | ASTM: A240 SA24 S30100 S30400 S30403 S31008 S31603 S32100 S41008 S43000 S43932 S44400 S44500 | |
| | JIS: G4304 G4305 G4312 SUS301 SUS304 SUS304L SUS310 SSUS316LSUS321 SUH409LSUS410S SUS420J2 SUS430 | |
| | AISI: 301 304 304L 310S 316L 321 409L 410S 430 439 441 444 445 | |
| | EN: 10088-2 17224 17440 17441 1.4310 1.4301 1.4306 1.4845 1.4404 1.4541 1.45121 .4000 1.4028 1.4016 1.4509 | |
| | Mill's Standard: 201 202 204Cu3 L1 L4 | |
| Available Size | Hot Rolled(No.1): Thickness: 2.5-10.0 mm Width: 914,1000,1219,1250,1500,1524,1800,2000 mm Length: 500-12000mm | Cold Rolled(2B): Thickness: 0.5-3.0 mm Width: 914,1000,1219,1250,1500,1524,1800,2000 mm Length: 500-12000mm |
| | Other specification is available on customers' requests. | |

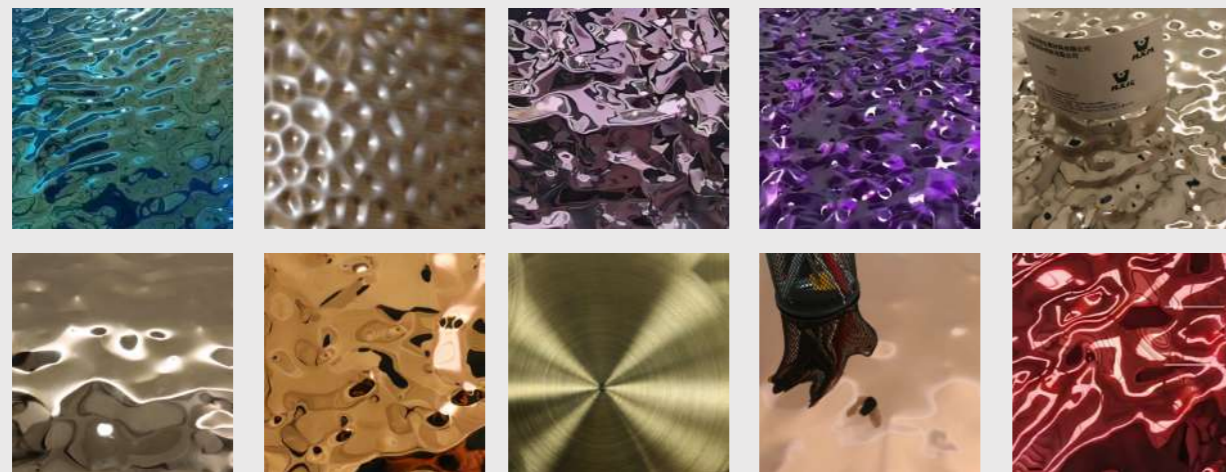


DECORATIVE STAINLESS STEEL SHEET

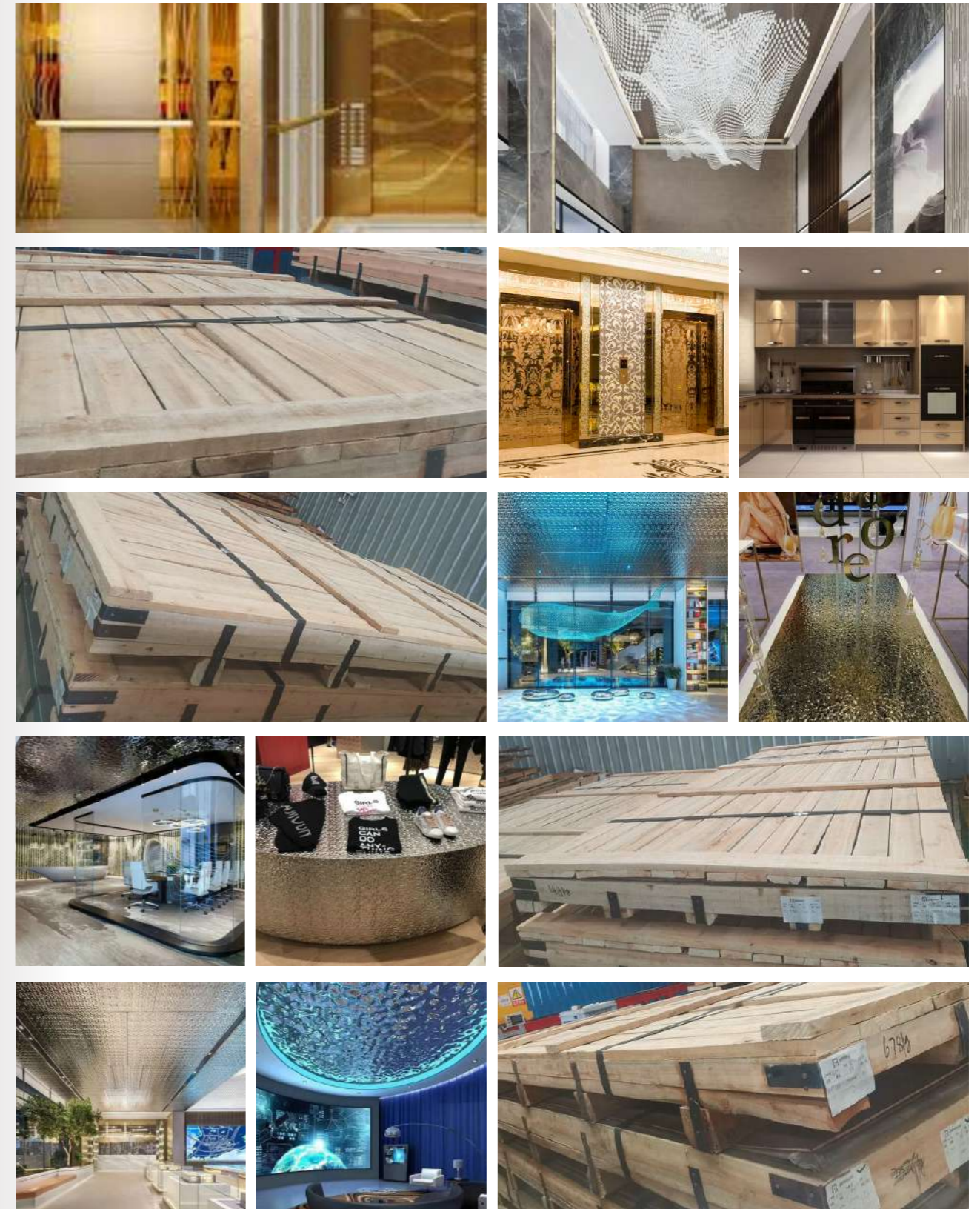
OTHER GRAIN STAINLESS STEEL SHEET

SPECIFICATION

| | |
|--|--|
| Standard & Grade | ASTM: A240 SA24 S30100 S30400 S30403 S31008 S31603 S32100 S41008 S43000 S43932 S44400 S44500 |
| | JIS: G4304 G4305 G4312 SUS301 SUS304 SUS304L SUS310 SSUS316LSUS321 SUH409LSUS410S SUS420J2 SUS430 |
| | AISI: 301 304 304L 310S 316L 321 409L 410S 430 439 441 444 445 |
| | EN: 10088-2 17224 17440 17441 1.4310 1.4301 1.4306 1.4845 1.4404 1.4541 1.45121 .4000 1.4028 1.4016 1.4509 |
| | Mill's Standard: 201 202 204Cu3 L1 L4 |
| Available Size | Thickness: 0.5-3.0mm |
| | Width: 914,1000,1219,1250,1500,1524,1800,2000 mm |
| | Length: 500-12000mm |
| Other specification is available on customers' requests. | |



PACKAGE & APPLICATION



B. STAINLESS STEEL STRIP

SPECIFICATION

| | | |
|------------------|--|---|
| Standard & Grade | ASTM: A240 SA24 S30100 S30400 S30403 S31008 S31603 S32100 S41008 S43000 S43932 S44400 S44500 | |
| | JIS: G4304 G4305 G4312 SUS301 SUS304 SUS304L SUS310 SSUS316LSUS321 SUH409LSUS410S SUS420J2 SUS430 | |
| | AISI: 301 304 304L 310S 316L 321 409L 410S 430 439 441 444 445 | |
| | EN: 10088-2 17224 17440 17441 1.4310 1.4301 1.4306 1.4845 1.4404 1.4541 1.45121 .4000 1.4028 1.4016 1.4509 | |
| | Mill's Standard: 201 202 204Cu3 L1 L4 | |
| Available Size | Hot Rolled Stainless Steel Strip: Thickness: 3.0-10.0 mm Width: 16-600mm ID: 610mm Finish: NO.1,1D | Cold Rolled Stainless Steel Strip: Thickness: 0.05-3.0 mm Width: 4-600mm Length: 2000,2438,2500,3000,3048,6069,10000,12000 Finish: 2B,2D,BA,No.3,No.4,No.5,SB,HL,8K |
| | Other specification is available on customers' requests. | |

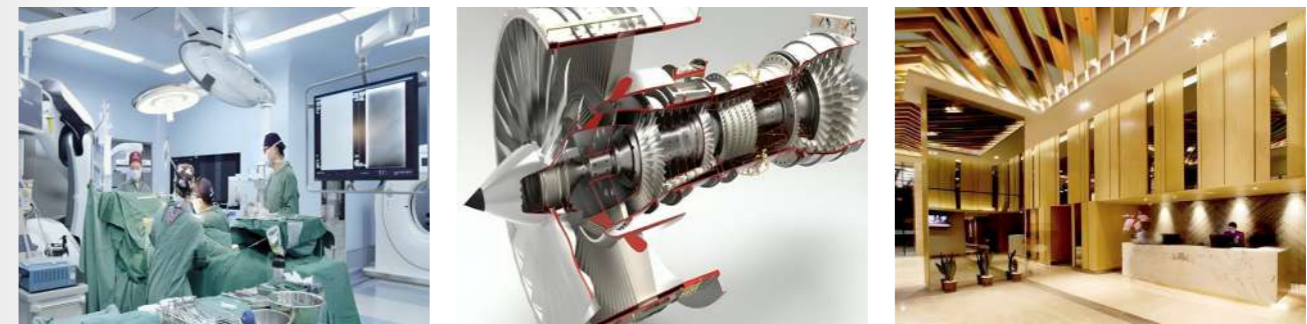
Stainless Steel Strip 不锈钢窄带



Stainless Steel Strip Packaging 不锈钢窄带包装



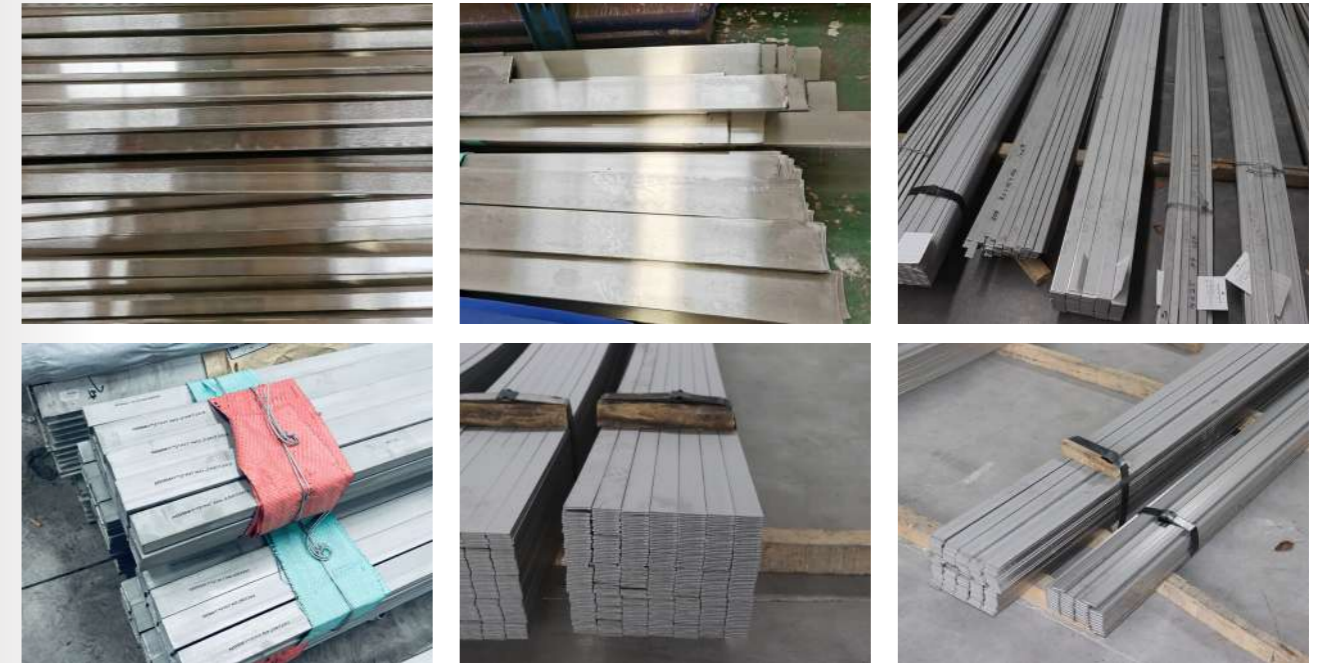
Application Of Stainless Steel Strip 不锈钢窄带应用



C. STAINLESS STEEL PROFILES

| FLAT BAR | | |
|--|---|-------------------|
| SPECIFICATION | | |
| Standard & Grade | ASTM / AISI : 304 316L 303 304 304N 304L 304LN 316 316N 316L 316LN 430 430F 403 410 416 | |
| | DIN: 10CrNiS189 5CrNi1810 2CrNi191 2CrNiN1810 5CrNiMo1712 2CrNiMo17132 2CrNiMoN17122 6Cr17 6CrMoS17 12Cr13 | |
| | EN: 1.4305 1.4301 1.4306 1.4311 1.4401 1.4404 1.4406 1.4016 1.4105 1.4006 | |
| Available Size | Thickness (mm) | Width (mm) |
| | 1.5 | 12.0 |
| | 1.5-3.0 | 10-200 |
| | 4.0-5.0 | 16-200 |
| | 6.0 | 19-200 |
| | 8.0-9.0 | 25-200 |
| | 10.0-12.0 | 30-200 |
| | 14.0 | 35-200 |
| | 15.0-16.0 | 40-200 |
| Tolerance | H6-H11 | |
| Other specification is available on customers' requests. | | |

Flat Bar 扁钢



Flat Bar Packaging 扁钢包装



Flat Bar Applications 扁钢应用



ANGLE BAR

SPECIFICATION

| | | |
|--|---|-------------------|
| Standard & Grade | ASTM / AISI : 304 316L 303 304 304N 304L 304LN 316 316N 316L 316LN 430 430F 403 410 416 | |
| | DIN: 10CrNiS189 5CrNi1810 2CrNi191 2CrNiN1810 5CrNiMo1712 2CrNiMo17132 2CrNiMoN17122 6Cr17 6CrMoS17 12Cr13 | |
| | EN: 1.4305 1.4301 1.4306 1.4311 1.4401 1.4404 1.4406 1.4016 1.4105 1.4006 | |
| Available Size | Thickness (mm) | Width (mm) |
| | 3.0 | 20*20 |
| | 3.0-5.0 | 25*25 |
| | 3.0-5.0 | 30*30 |
| | 3.0-6.0 | 40*40 |
| | 3.0-8.0 | 50*50 |
| | 5.0-8.0 | 60*60 |
| | 5.0-8.0 | 65*65 |
| Tolerance | H6-H11 | |
| Other specification is available on customers' requests. | | |

Angle Bar 角钢



Angle Bar Packaging 角钢包装

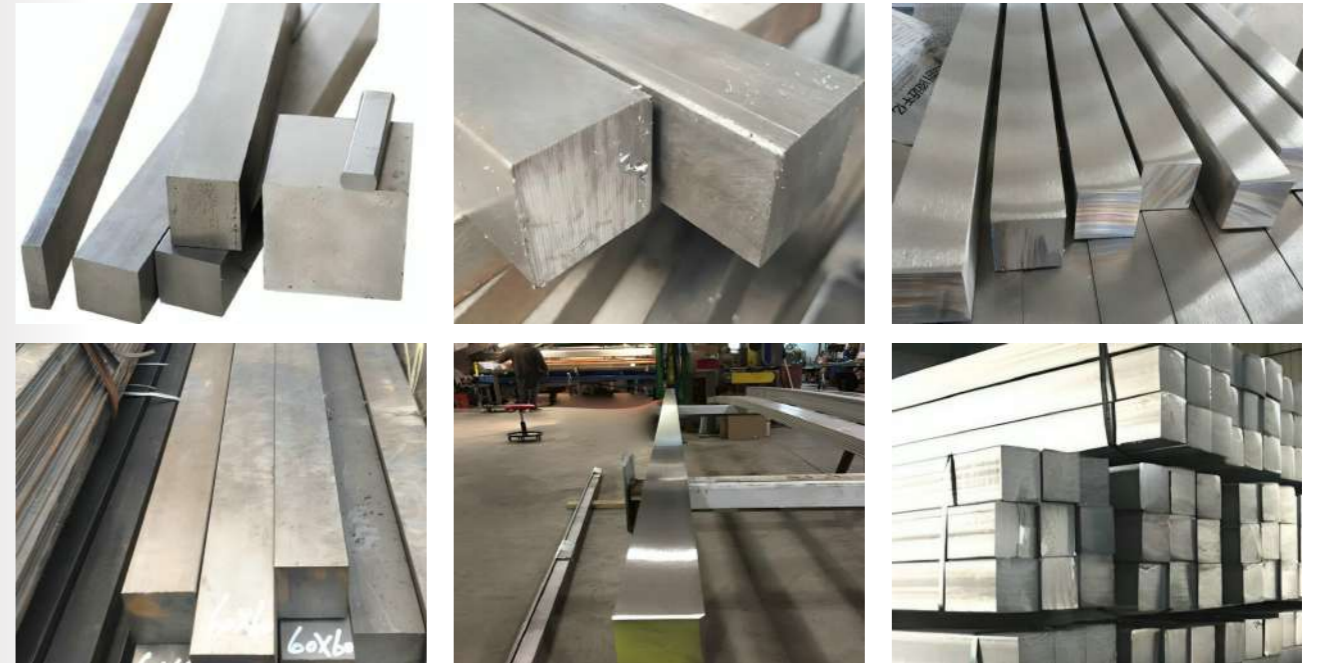


Angle Bar Applications 角钢应用



| SQUARE BARS | |
|--|---|
| SPECIFICATION | |
| Standard & Grade | ASTM / AISI : 304 316L 303 304 304N 304L 304LN 316 316N 316L 316LN 430 430F 403 410 416 |
| | DIN: 10CrNiS189 5CrNi1810 2CrNi191 2CrNiN1810 5CrNiMo1712 2CrNiMo17132 2CrNiMoN17122 6Cr17 6CrMoS17 12Cr13 |
| | EN: 1.4305 1.4301 1.4306 1.4311 1.4401 1.4404 1.4406 1.4016 1.4105 1.4006 |
| Available Size | 4.76mm-76.2mm |
| Tolerance | H6-H11 |
| Other specification is available on customers' requests. | |

Square Bar
方棒



Square Bar Packaging
方棒包装



Square Bar Applications
方棒应用



| ROUND BARS | | | | |
|--|---|-------------------------------|-------------------------------------|--|
| SPECIFICATION | | | | |
| Standard & Grade | ASTM / AISI : 304 316L 303 304 304N 304L 304LN 316 316N 316L 316LN 430 430F 403 410 416 | | | |
| | DIN: 10CrNiS189 5CrNi1810 2CrNi191 2CrNiN1810 5CrNiMo1712 2CrNiMo17132 2CrNiMoN17122 6Cr17 6CrMoS17 12Cr13 | | | |
| | EN: 1.4305 1.4301 1.4306 1.4311 1.4401 1.4404 1.4406 1.4016 1.4105 1.4006 | | | |
| Available Size | Hot Rolled Round Bar: 12-200mm | Peeled Round Bar: 19-160mm | Cold Drawn Round Bar: 4.76-100mm | Centreless Grinding Round Bar: 4.76-101mm |
| Tolerance | H6-H11 | | | |
| Other specification is available on customers' requests. | | | | |

Round Bar
圆棒



Round Bar Packaging
圆棒包装



Round Bar Applications
圆棒应用



| HEXAGON BARS | |
|--|---|
| SPECIFICATION | |
| Standard & Grade | ASTM / AISI : 304 316L 303 304 304N 304L 304LN 316 316N 316L 316LN 430 430F 403 410 416 |
| | DIN: 10CrNiS189 5CrNi1810 2CrNi191 2CrNiN1810 5CrNiMo1712 2CrNiMo17132 2CrNiMoN17122 6Cr17 6CrMoS17 12Cr13 |
| | EN: 1.4305 1.4301 1.4306 1.4311 1.4401 1.4404 1.4406 1.4016 1.4105 1.4006 |
| Available Size | 4.76mm-76.00mm |
| Tolerance | H6-H11 |
| Other specification is available on customers' requests. | |

Hexagon Bar 六角钢



Hexagon Bar Packaging 六角钢包装



Hexagon Bar Applications 六角钢应用



D. STAINLESS STEEL TUBE

SEAMLESS TUBE

| | | |
|--|--------------------------------|---|
| ASTM: A312/A312M ASME: SA312/SA312M Round Tube | Material / Steel Grade: | TP304 TP304L TP304H TP310 TP310S TP316 TP316L TP316Ti TP317 TP317L TP321 TP321H TP347 TP347H |
| | Size: | OD: 1/4" - 20" WT: SCH5S~SCH80S |
| | Finish: | Mill 2B BA 240GRIT 320GRIT 600GRIT 800GRIT |
| | Application: | Seamless Austenitic Stainless Steel Pipes |
| Other specification is available on customers' requests. | | |



| | | |
|--|--------------------------------|---|
| ASTM A269 ASMESA269 Round Tube | Material / Steel Grade: | TP304 TP304L TP304H TP310 TP310S TP316 TP316L TP316Ti TP317 TP317L TP321 TP321H TP347 TP347H |
| | Size: | OD: 6.0 - 50.8mm WT: 0.8 - 10.0mm |
| | Finish: | Mill 2B BA 240GRIT 320GRIT 600GRIT 800GRIT |
| | Application: | Seamless Austenitic Stainless Steel Tubing for General Service |
| Other specification is available on customers' requests. | | |



| | | |
|--|--------------------------------|---|
| ASTMA213 / A213M ASMESA213 / SA213M Round Tube | Material / Steel Grade: | TP304 TP304L TP304H TP310 TP310S TP316 TP316L TP316Ti TP317 TP317L TP321 TP321H TP347 TP347H |
| | Size: | OD: 6.0 - 50.8mm WT: 0.8 - 10.0mm |
| | Finish: | Mill 2B BA 240GRIT 320GRIT 600GRIT 800GRIT |
| | Application: | Seamless Austenitic Alloy-Steel Boiler, Super Heater and Heat-Exchanger Tubes |
| Other specification is available on customers' requests. | | |



| | | |
|--|--------------------------------|--|
| ASTM A790/790M Round Tube | Material / Steel Grade: | S31803 S32205 S32750 |
| | Size: | OD: 3/4"~10" WT: SCH5S~SCH80S |
| | Finish: | Mill 2B BA 240GRIT 320GRIT 600GRIT 800GRIT |
| | Application: | Seamless Duplex Stainless Steel Tubing for General Service |
| Other specification is available on customers' requests. | | |



| | | |
|----------------------------------|--------------------------------|--|
| ASTM A789/789M Round Tube | Material / Steel Grade: | S31803 S32205 S32750 |
| | Size: | OD: 19.0~60.5mm WT: 1.2~5.0mm |
| | Finish: | Mill 2B BA 240GRIT 320GRIT 600GRIT 800GRIT |
| | Application: | Seamless Duplex Stainless Steel Tubing for General Service |

Other specification is available on customers' requests.



| | | |
|-----------------------------|--------------------------------|---|
| ASTM A511 Round Tube | Material / Steel Grade: | 1.4301 1.4307 1.4541 1.4401 1.4404 1.4571 1.4878 1.4432 1.4462 |
| | Size: | OD: 6.0~530.0mm WT: 0.8~34.0mm |
| | Finish: | Mill 2B BA 240GRIT 320GRIT 600GRIT 800GRIT |
| | Application: | Seamless Stainless Steel Tubes for Pressure Purposes |

Other specification is available on customers' requests.



| | | |
|-----------------------------|--------------------------------|--|
| ASTM A511 Round Tube | Material / Steel Grade: | MT304 MT304L MT304H MT310 MT310S MT316 MT316L MT317 MT317L MT321 MT321H MT347 |
| | Size: | OD: 6.0~50.8mm WT: 0.8~10.0mm |
| | Finish: | Mill 2B BA 240GRIT 320GRIT 600GRIT 800GRIT |
| | Application: | Seamless Stainless Steel Mechanical Tubing |

Other specification is available on customers' requests.



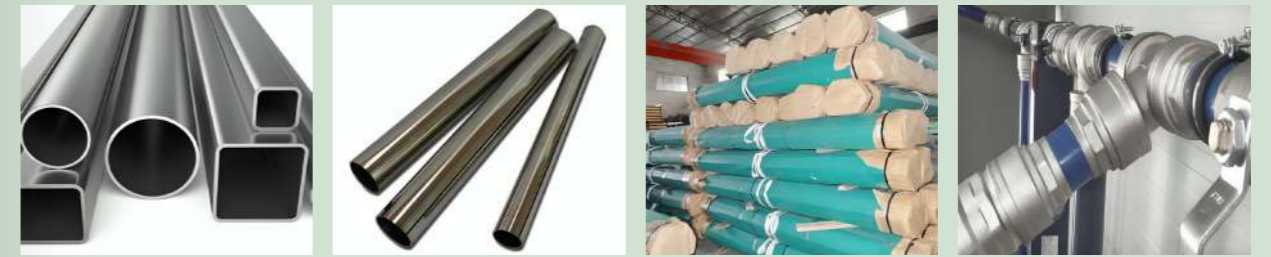
| WELDED TUBE | | |
|--|--------------------------------|---|
| ASTM A249 A269 JIS G3463 Round Tube | Material / Steel Grade: | TP304 TP304L TP316L SUS304TP |
| | Size: | OD: 15.9~139.8mm WT: 1.6~5.0mm |
| | Finish: | Mill 2B BA 240GRIT 320GRIT 600GRIT 800GRIT |
| | Application: | for Boiler and Heat-Exchanger, General Service Tubing |
| Other specification is available on customers' requests. | | |



| | | |
|--|--------------------------------|--|
| ASTMA270 JIS G3447 Round Tube | Material / Steel Grade: | TP304 TP304L TP316L SUS304TP |
| | Size: | OD: 25.4~165.2mm WT: 0.8~3.05mm |
| | Finish: | Mill 2B BA 240GRIT 320GRIT 600GRIT 800GRIT |
| | Application: | Sanitary Tubes |
| Other specification is available on customers' requests. | | |



| | | |
|--|--------------------------------|--|
| JIS G3448 Round Tube | Material / Steel Grade: | SUS304TPD |
| | Size: | OD: 15.88~318.5mm WT: 0.8~3.0mm |
| | Finish: | Mill 2B BA 240GRIT 320GRIT 600GRIT 800GRIT |
| | Application: | Large Gauge Pipes for Ordinary Piping |
| Other specification is available on customers' requests. | | |

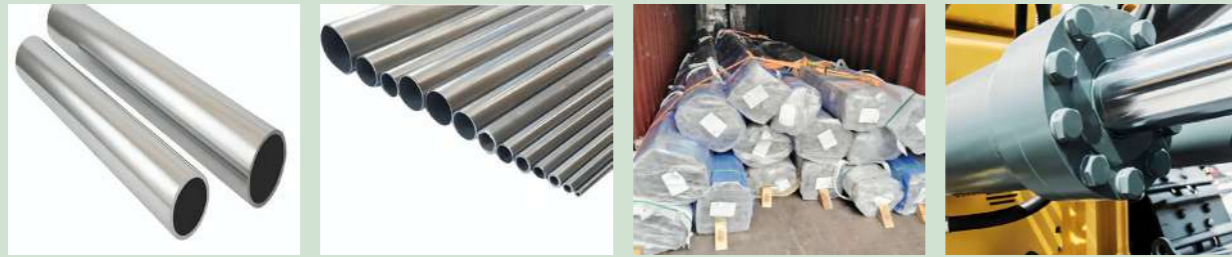


| | | |
|--|--------------------------------|--|
| JIS G3468 Round Tube | Material / Steel Grade: | SUS304TPY |
| | Size: | OD: 14"~40" WT: SCH5S~SCH40S |
| | Finish: | Mill 2B BA 240GRIT 320GRIT 600GRIT 800GRIT |
| | Application: | Large Diameter Pipes |
| Other specification is available on customers' requests. | | |



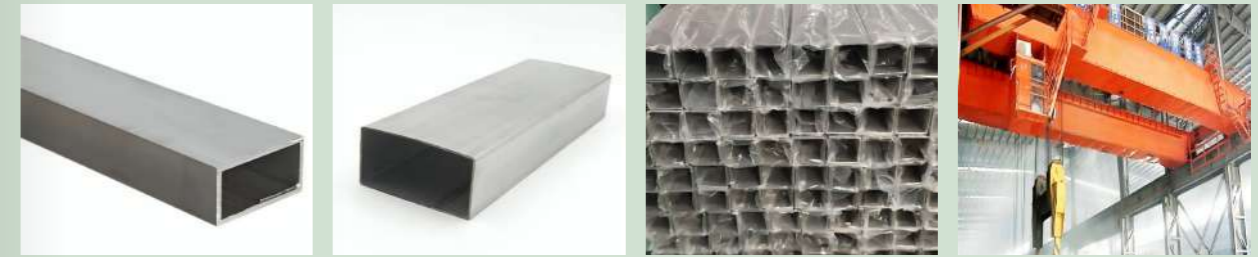
| | | |
|-------------------------------------|--------------------------------|--|
| ASTMA554 JIS G3446 Round Tube | Material / Steel Grade: | MT304 MT304L MT316L MT430 Grade 201, 202 as per mill's STD SUS304 |
| | Size: | OD: 7.9~152.4mm WT: 0.5~6.5mm |
| | Finish: | Mill 2B BA 240GRIT 320GRIT 600GRIT 800GRIT |
| | Application: | Mechanical and Structural Tubes |

Other specification is available on customers' requests.



| | | |
|--|--------------------------------|--|
| ASTM A554 JIS G3446 Rectangular Tube | Material / Steel Grade: | MT304 MT304L MT316L MT430 Grade 201, 202 as per mill's STD |
| | Size: | OD: 10x20~100x200mm WT: 0.7~6.5mm |
| | Finish: | Mill 220/320/400/600 Grit |
| | Application: | Rectangular Tubes |

Other specification is available on customers' requests.



| | | |
|---------------------------------------|--------------------------------|--|
| ASTM A554 JIS G3446 Square Tube | Material / Steel Grade: | MT304 MT304L MT316L MT430 Grade 201, 202 as per mill's STD |
| | Size: | OD: 12.7x12.7~150x150mm WT: 0.7~6.5mm |
| | Finish: | Mill 2B BA 240GRIT 320GRIT 600GRIT 800GRIT |
| | Application: | Square Tubes |

Other specification is available on customers' requests.



| | | |
|---|--------------------------------|--|
| ASTM A312 A358 A778 JIS G3459 Round Tube | Material / Steel Grade: | TP304 TP304L TP316L SUS304TP |
| | Size: | OD: 1/4"~40" WT: SCH5S~SCH80S |
| | Finish: | Mill 2B BA 240GRIT 320GRIT 600GRIT 800GRIT |
| | Application: | Industrial Pipes |

Other specification is available on customers' requests.



E. STAINLESS STEEL WIRE

SPECIFICATION

| | | |
|--|--|--|
| Standard & Grade | ASTM / AISI : 201 302 304 316L 303 304 304N 304L 304LN 316 316N 316L 316LN 316H1 430 430F 403 410 416 | |
| | DIN: 10CrNiS189 5CrNi1810 2CrNi191 2CrNiN1810 5CrNiMo1712 2CrNiMo17132 2CrNiMoN17122 6Cr17 6CrMoS17 12Cr13 | |
| | JIS: G4314 SUS316 SUS631 SUS631J1 | |
| | EN: 10270-3 1.4310 1.44101 1.4568 1.4568 1.4305 1.4301 1.4306 1.4311 1.4401 1.4404 1.4406 1.4016 1.4105 1.4006 | |
| Available Size | Diameter: 0.02mm-12mm | Finish: HUB HEB HRD HUBNS NHF, etc |
| Other specification is available on customers' requests. | | |

Stainless Steel Wire 不锈钢线材



Stainless Steel Wire Packaging 不锈钢线材包装



Application Of Stainless Steel Wire 不锈钢线材应用



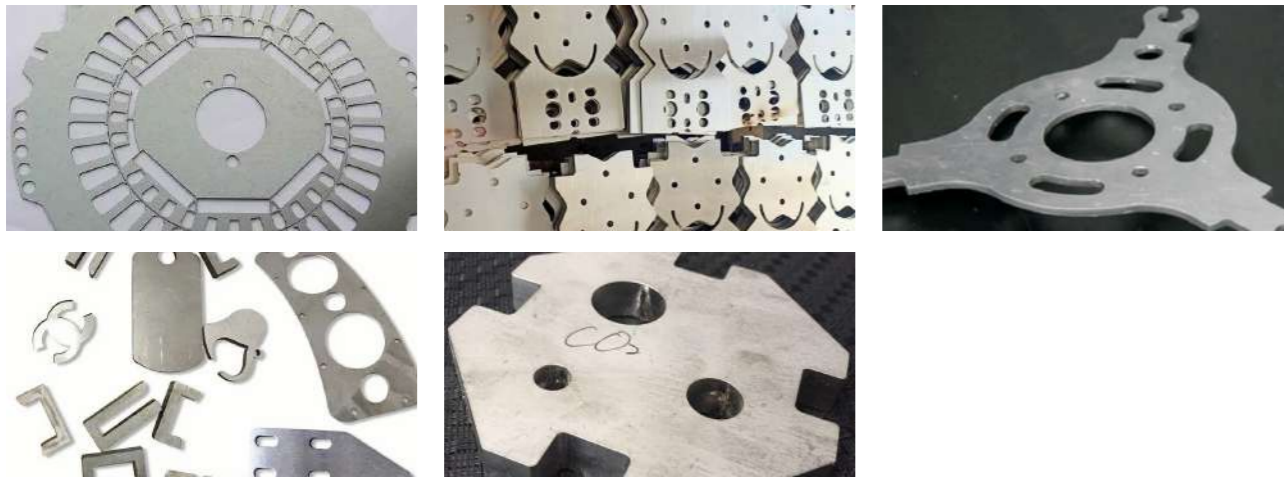
F. CUSTOMIZED STAINLESS STEEL PRODUCTS

Laser Cutting

We can provide laser cutting services to meet your different needs for products. Welcome to customize with pictures.

Laser Cutting

激光切割



Laser Cutting Package

激光切割包装



Application Of Laser Cutting

激光切割应用

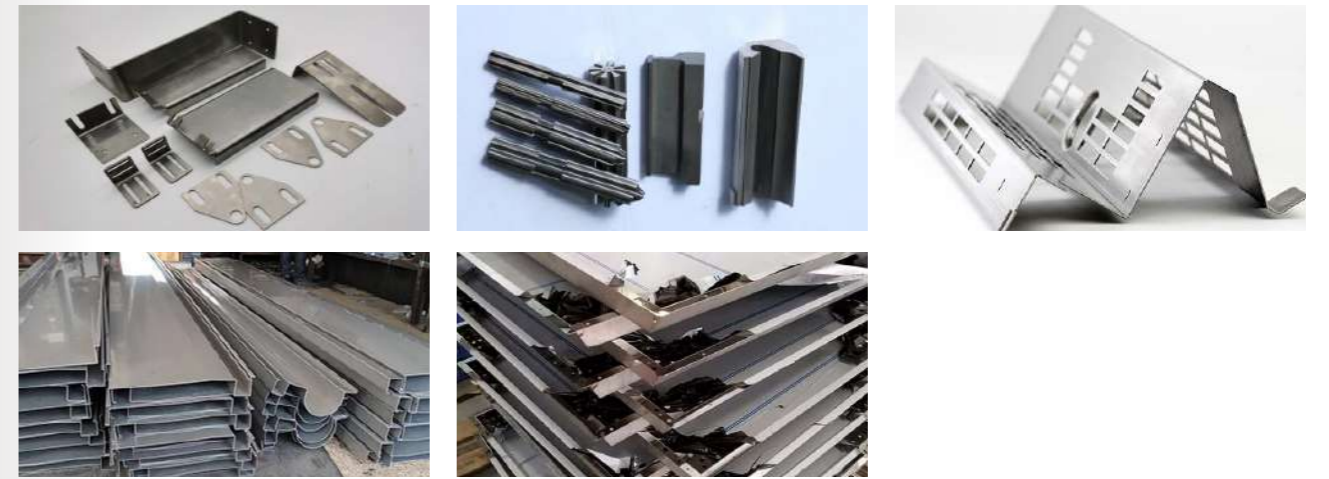


Sheet Metal Processing

We can provide sheet metal processing services such as bending, to meet your different needs for products. Welcome to image customization or email consultation.

Sheet Metal Processing

钣金加工



Sheet Metal Processing Package

钣金加工包装



Application Of Sheet Metal Processing

钣金加工应用



Part 7

OUR PACKAGE

I 公司运输



We employ a comprehensive and foolproof approach to packing, which involves assessing the specific requirements of the metal products we are shipping. This process considers factors such as size, weight, fragility, and corrosion resistance. With this information in hand, we use state-of-the-art packaging materials designed to protect the integrity of the goods throughout their journey.

我们采用全面且万无一失的包装方法，其中包括评估我们运输的金属产品的具体要求。该过程考虑了尺寸、重量、脆性和耐腐蚀性等因素。有了这些信息，我们就可以使用最先进的包装材料来保护货物在整个旅程中的完整性。



Extra Heavy Stainless Steel Coil Reinforcement



Extra Wide Stainless Steel Plate in a Special Frame Box

Over the years, HXM has established itself as a trusted player in the metal trading industry with a strong focus on exports. Our wealth of experience in sea freight and cargo handling has enabled us to excel in delivering exceptional service to our clients.

多年来，HXM 已成为金属贸易行业值得信赖的出口商。我们在海运和货物装卸方面的丰富经验使我们能够出色地为客户提供卓越的服务。



One of our key strengths lies in our meticulous approach to packing and packaging. We understand the critical importance of ensuring that our clients receive their goods in perfect condition, no matter how far they need to travel. This commitment to quality begins with our careful selection of packaging materials and extends to our expert packing techniques.

我们的主要优势之一在于我们一丝不苟的包装方法。我们了解确保客户收到完好无损的货物的至关重要性，无论他们需要旅行多远。这种对质量的承诺始于我们对包装材料的精心选择，并延伸到我们专业的包装技术。



In commitment to flawless deliveries, HXM uses waterproof and oil-resistant mark. This precaution not only enhances label durability but also effectively guards against moisture and contamination, ensuring your cargo remains intact throughout the transportation process.

为了保证完美交付，HXM 使用防水防油标志。这种预防措施不仅可以增强标签的耐用性，还可以有效防止潮湿和污染，确保您的货物在整个运输过程中保持完好无损。



HXM Waterproof and Oil-resistant Mark

Our dedication to providing secure and damage-free packaging not only safeguards our clients' investments but also contributes to our reputation for reliability and excellence in the industry. We are proud to be your trusted partner in the world of metal exports, and we remain committed to delivering your cargo with the utmost care and precision.

我们致力于提供安全、无损坏的包装，不仅可以保护客户的投资，还有助于提高我们在行业中的可靠性和卓越声誉。我们很自豪能够成为您在金属出口领域值得信赖的合作伙伴，并且我们仍然致力于以最谨慎和精确的方式交付您的货物。

Part 8

OUR TEAM

I 公司团队

HXM is a growing team composed of many high-quality talents.

Our team is steadfast in its commitment to environmental sustainability, actively addressing low carbon initiatives, reducing carbon footprints, promoting carbon cycling, and minimizing carbon emissions through recyclable practices.

Let us work together to create a better future!

HXM 是一个不断壮大的团队,由多位高素质人才组成。

我们的团队坚定地致力于环境可持续发展,积极应对低碳举措,减少碳足迹,促进碳循环,并通过可回收实践最大限度地减少碳排放。

让我们为创造更好的明天一起努力!

